

# Atodiad A



## Pecyn Cefndirol Background Pack

### Ysgol newydd i Gricieth

### New school for Cricieth

<b>Cyfarfod Panel Adolygu Lleol 1 – 13 Mehefin 2019</b>		<b>Local Review Panel Meeting 1 – 13 June 2019</b>
Agenda	1	Agenda
Cyflwyniad	2	Presentation
Cofnodion y Cyfarfod - Cymraeg	29	Meeting Minutes - Welsh
Cofnodion y Cyfarfod – Saesneg	32	Meeting Minutes - English
<b>Cyfarfod Panel Adolygu Lleol 2 – 9 Hydref 2019</b>		<b>Local Review Panel Meeting 2 – 9 October 2019</b>
Agenda	35	Agenda
Map Safleoedd	36	Sites Map
Asesiad rhestr hir safleoedd - Cymraeg	37	Sites' longlist assessment - Welsh
Asesiad rhestr hir safleoedd - Saesneg	45	Sites' longlist assessment - English
Cynlluniau o'r ysgol ar y safleoedd	52	Plans of the school on the sites
Cofnodion y Cyfarfod - Cymraeg	56	Meeting Minutes - Welsh
Cofnodion y Cyfarfod – Saesneg	58	Meeting Minutes - English
<b>Cyfarfod Panel Adolygu Lleol 3 – 10 Rhagfyr 2019</b>		<b>Local Review Panel Meeting 3 – 10 December 2019</b>
Agenda	60	Agenda
Asesiad rhestr fer safleoedd - Cymraeg	61	Sites' shortlist assessment - Welsh
Asesiad rhestr fer safleoedd - Saesneg	69	Sites' shortlist assessment - English

# Atodiad A

Asesiad SWOT safleoedd - Cymraeg	77	Sites' SWOT analysis - Welsh
Asesiad SWOT safleoedd – Saesneg	81	Sites' SWOT analysis - English
Cofnodion y Cyfarfod - Cymraeg	85	Meeting Minutes - Welsh
Cofnodion y Cyfarfod - Saesneg	88	Meeting Minutes – English
<b>Cyfarfod Panel Adolygu Lleol 4 – 24 Mehefin 2020</b>		<b>Local Review Panel Meeting 4 – 24 June 2020</b>
Agenda	91	Agenda
Materion yn ymwneud a safle Capel Uchaf - Cymraeg	92	Matters relating to the Capel Uchaf site - Welsh
Materion yn ymwneud a safle Capel Uchaf – Saesneg	94	Matters relating to the Capel Uchaf site - English
Addasrwydd safle A497 - Cymraeg	96	A497 site suitability - Welsh
Addasrwydd safle A497 – Saesneg	97	A497 site suitability - English
Amserlen	99	Timetable
Cofnodion y Cyfarfod - Cymraeg	100	Meeting Minutes – Welsh
Cofnodion y Cyfarfod – Saesneg	103	Meeting Minutes - English

---

## Panel Adolygu Lleol 1 Local Review Panel 1

18:00 – 19:30,  
Dydd Iau, 13 Mehefin 2019 / Thursday, 13 June 2019

Ystafell Werdd, Neuadd Goffa Cricieth / Green Room, Cricieth Memorial Hall

---

- 1. GEIRIAU AGORIADOL YR AELOD CABINET DROS ADDYSG (Cyng. Cemlyn Williams)**  
OPENING WORDS FROM THE CABINET MEMBER FOR EDUCATION
- 2. BRIFF PANEL ADOLYGU LLEOL (Gwern ap Rhisiart, Swyddog Addysg Ardal Meirion a Dwyfor)**  
LOCAL REVIEW PANEL BRIEF
- 3. RHAGLEN WAITH AMLINELLOL Y PANEL (Gareth Jones, Swyddog Moderneiddio Addysg)**  
OUTLINE WORK PROGRAMME FOR THE PANEL
- 4. CYFLWYNIAD (Gwern ap Rhisiart, Swyddog Addysg Ardal Meirion a Dwyfor)**  
PRESENTATION
- **Toriad / Break** -----
- 5. TRAFODAETH**  
DISCUSSION
- 6. CLOI**  
CLOSE

# Ysgol newydd yng Nghricieth / New school in Cricieth



# Briff y Panel

1.	<b>Enw'r Panel</b>	<b>Panel Adolygu Lleol Ysgol Newydd i Gricieth</b>
2.	<b>Aelodau'r Panel</b>	<ul style="list-style-type: none"> <li>• Aelod Cabinet dros Addysg: Cyng. Cemlyn Williams</li> <li>• Aelodau Lleol</li> <li>• Pennaeth, Cadeirydd Llywodraethwyr ac un Rhiant Lywodraethwr o pob ysgol + 2 aelod ychwanegol o gorff llywodraethol Ysgol Trefferthyr</li> <li>• 2 gynrychiolydd o'r Eglwys yng Nghymru</li> <li>• Swyddogion Cyngor Gwynedd: Gwern ap Rhisiart (Swyddog Addysg Meirion a Dwyfor); Gareth Jones (Swyddog Moderneiddio Addysg); Sioned Hughes (Swyddog Prosiect)</li> <li>• Yn ogystal, estynnir gwahoddiad i swyddogion eraill ar faterion penodol ar gais yr Aelod Cabinet Addysg.</li> </ul>
3.	<b>Diffiniad o waith y Panel</b>	<p>Sefydlir y Panel Adolygu Lleol er mwyn trafod strategaethau ac amcanion, gwybodaeth ysgolion, prosesau, cyfathrebu, trafod opsiynau, trafod safleoedd, er mwyn cytuno opsiwn a safle ffafredig.</p> <p>Gwelir y Panel Adolygu fel doler gyswllt bwysig rhwng yr Aelod Cabinet Addysg a chynrychiolwyr y cymunedau.</p> <p>Yn dilyn cyfraniad y Panel Adolygu bydd yr Aelod Cabinet Addysg yn cyflwyno cynnig i Gabinet Cyngor Gwynedd.</p>
4.	<b>Sgôp y gwaith</b>	<ol style="list-style-type: none"> <li>Cytuno'r briff, aelodaeth ac amserlen y gwaith</li> <li>Ystyried tystiolaeth a baratowyd ar sefyllfa ysgolion</li> <li>Derbyn adborth gan gynrychiolwyr ysgolion</li> <li>Trafod opsiynau a safleoedd posib</li> <li>Cyfrannu i'r trafodaeth cyn i'r opsiwn ffafredig cael ei adnabod</li> </ol>
5.	<b>Amserlen</b>	<p>Gweler Rhaglen waith arfaethedig.</p> <p>Bydd angen i'r Panel Adolygu gwblhau y trafodaethau erbyn canol mis Hydref 2019. Mi fydd yr Aelod Cabinet Addysg yna'n cyflwyno cynigion i Gabinet y Cyngor.</p>

# Rhaglen waith y Panel

Dyddiad	Lleoliad	Teitl y Cyfarfod	Pwrpas
13 Mehefin	Neuadd Goffa Cricieth	PAL 1	Cytuno pwrpas y Panel Egluro'r broses Cyflwyno sefyllfa bresennol a buddion ysgol newydd Derbyn sylwadau a chwestiynau
27 Mehefin	Neuadd Goffa Cricieth	PAL 2	Ymateb i sylwadau a chwestiynau yn dilyn PAL1
<p>Corff Llywodraethol Ysgol Llanystumdwy i benderfynu os ydynt am barhau i fod yn rhan o drafodaethau PAL tan y diwedd.</p> <p>Mae'r camau dilynol yn ddibynnol ar benderfyniad Ysgol Llanystumdwy i barhau yn y trafodaethau neu ddim. Mae'n bosib fydd natur y cyfarfodydd yn newid a'r nifer cyfarfodydd yn lleihau os nad ydynt am barhau.</p>			
5 Medi	I'w gadarnhau	PAL 3	Diweddariad yn dilyn PAL2 Trafod strategaethau ac amcanion addysg Cytuno opsiynau posib Cyflwyno safleoedd posib a chytuno safle ffafredig
19 Medi	I'w gadarnhau	PAL 4	Cytuno rhestr fer o opsiynau
23-27 Medi	Ysgol Treferthyr ac Ysgol Llanystumdwy	Sesiwn plant (Cyngor ysgol x 2)	Cael mewnbwn plant i'r opsiynau rhestr fer
10 Hydref	I'w gadarnhau	PAL 5	Adborth y sesiwn plant Cyflwyniad ar asesiad iaith Gymraeg, cymunedol, cydraddoldeb Asesiad opsiynau rhestr fer Cytuno opsiwn a ffafrir Egluro'r camau nesaf

**CABINET** - Yn ddibynnol ar ganlyniad y cyfarfodydd PAL, mi fydd yr Aelod Cabinet Addysg yn cyflwyno ei gynigion i Cabinet y Cyngor. Pwrpas gwneud hyn fydd i geisio cymeradwyaeth i gynnal cyfnod o ymgynghori statudol.

## Cefndir y prosiect / *Project background*

- Cais am arian Rhaglen Ysgolion 21G (Band B) Llywodraeth Cymru ar gyfer adeiladu ysgol newydd
- *Application for funding from the Welsh Government's 21C Schools (Band B) Programme for the construction of a new school*

# Pam cynnwys Ysgol Llanystumdwy? / Why include Ysgol Llanystumdwy?

Angen adeiladu ysgol newydd i holl blant oed cynradd dalgylch Trefferthyr /  
*The need to build a new school for all primary age children in the Trefferthyr catchment area*

Mynd i ysgolion eraill (Medi 2018)	Trefferthyr	104
	Llanystumdwy	9
	Chwilog	0
	Garndolbenmaen	2
	Eifion Wyn	3
	Y Gorlan	9
	Borthygest	1
	Arall	2
	<b>Cyfanswm</b>	<b>130</b>



# Y sefyllfa bresennol / *Present situation*



# Asesiadau Estyn a Llywodraeth Cymru / Estyn and Welsh Government assessments

Estyn							Llywodraeth Cymru Welsh Government
Ysgol School	Blwyddyn yr archwiliad Year of Inspection	Safonau Standards	Lles ac agweddau at ddysgu Wellbeing and attitude towards learning	Addysgu a phrofiadau dysgu Education and learning experiences	Gofal, cymorth ac arweiniad Support ,Care and guidance	Arweinyddiaeth a rheolaeth Leadership and management	Categori Cefnogaeth Llywodraeth Cymru 2018 Welsh Government Support Category 2018
Treferythyr	2018	Da/Good	Da/Good	Da/Good	Da/Good	Da/Good	Gwyrdd / Green
Llanystumdwy	2018	Da/Good	Da/Good	Da/Good	Da/Good	Da/Good	Gwyrdd / Green

## Categori Cefnogaeth Llywodraeth Cymru

•Categori cefnogaeth gwyrdd - Bydd ysgol yn y categori hwn yn derbyn hyd at 4 diwrnod o amser cynghorydd her.

Bydd pob cynghorydd her yn pennu natur y pecyn cymorth penodol a gaiff ei ddarparu i bob ysgol, yn unol â'r angen.

# Gwybodaeth am nifer plant yn yr ysgolion a dalgylch eu cartrefi / Information regarding the number of pupils in the schools and catchment area of their homes

		Dalgylch Cartref Home Catchment					Cyfanswm (M-BI6) Total (N – Yr6)
		TreferThyr	Llanystumdwy	Garndolben- maen	Y Gorlan	Arall Other	
Ysgol / School	Ysgol School						
	Treferthyr	104	3	2	2	3	114
	Llanystumdwy	9	9	0	0	3	21
	Garndolbenmaen	2	0				
	Y Gorlan	9	1				
	Arall / Other	6	3				
Cyfanswm (M-BI6) Total (N – Yr6)		130	16				

Ffynhonnell: Cyfrifiad Ysgolion Medi 2018  
Source: September 2018 School Census

# Ystod oedran mewn dosbarthiadau 2018-19 / Age range in classes 2018-19

Ysgol <i>School</i>	Meithrin <i>Nursery</i>	Derbyn <i>Reception</i>	BI 1 <i>Yr 1</i>	BI2 <i>Yr 2</i>	BI 3 <i>Yr 3</i>	BI 4 <i>Yr 4</i>	BI 5 <i>Yr 5</i>	BI 6 <i>Yr 6</i>	Cyfanswm <i>Total</i>	Nifer y dosbarthiadau <i>No. of Classes</i>	Dosbarth mwyaf <i>Largest Class</i>	Dosbarth lleiaf <i>Smallest Class</i>	Maint dosbarth ar gyfartaledd <i>Average Class Size</i>
<b>Treforthyr</b>	12	15	14	14	14	14	14	17	114				
Dosbarthiadau	12	29		14	28		31			5	31	12	22.8
<b>Llanystumdwy</b>	2	2	2	3	0	4	4	4	21				
Dosbarthiadau	9			12						2	12	9	10.5

Ffynhonnell: Cyfrifiad Ysgolion Medi 2018  
Source: September 2018 School Census

# Rhagamcanion disgyblion 4 mlynedd/ *4 year pupil projections*

	2018	2019	2020	2021	2022
Treferthyr	114	116	115	114	112
Llanystumdwy	21	22	20	20	19

Ffynhonnell: Penaethiaid y 2 ysgol  
Source: Heads of the 2 schools

# Cyllidebau Ysgolion 2019-20 / School budgets 2019-20

Ysgol School	CYLLIDEB 2019-20 / 2019-20 BUDGET			
	Dyranriad / Allocation	Gwarchodaeth lleiafswm staffio* / Minimum staffing protection*	Cyfanswm cyllideb / Total budget	Cyfartaledd y Disgybl / Average per pupil
Trefferthyr	£389,431	£0	£389,431	£3,630
Llanystumdwy	£128,422	£51,530	£179,952	£9,052
<b>Cyfartaledd Ysgolion Cynradd y Dalgylch / Catchment Area Average Primary</b>			£333,290	£5,520
<b>Cyfartaledd Ysgolion Cynradd y Sir / County Average Primary</b>			£404,000	£3,884

Ffynhonnell: Dyranriad Cyllidol Ysgolion Cynradd  
2019-20  
Source: Primary Schools Budget Allocation 2019-20

\*Mae'r polisi gwarchodaeth yn sicrhau o leiaf pennaeth ac athro/athrawes ym mhob Ysgol sydd gyda mwy na 15 disgybl, a pennaeth a cymhorthydd dosbarth mewn ysgolion sydd gyda llai na 15 disgybl.

\*The minimum staffing protection policy ensures a minimum of headteacher and teacher at every school which has more than 15 pupils, and a headteacher and a classroom assistant in a school with fewer than 15 pupils.

# Y 10 ysgol cynradd sy'n derbyn cyfraniad mwyaf o arian ychwanegol yn 2019-20

## 10 primary schools receiving the most additional funding in 2019-20

Ysgol	Niferoedd Ionawr 2019		Dyranriad ac arian ychwanegol		Cyllideb 2019-20	
	Meithrin	D - Bl. 6	Dyranriad	Arian ychwanegol	Cyfanswm	Cost y disgybl
PENNAL	2	16	£116,896	£61,974	£178,870	£11,264
BEDDGELERT	2	19	£95,794	£52,307	£148,101	£7,844
LLANYSTUMDWY	2	19	£128,422	£51,530	£179,952	£9,052
NEBO	0	22	£123,003	£48,119	£171,122	£7,778
Y GARREG	2	24	£119,898	£44,123	£164,021	£6,869
LLANAELHAEARN	0	11	£95,635	£43,744	£139,379	£12,671
FELINWYNDY	1	25	£110,514	£40,807	£151,321	£5,948
BALADEULYN	1	22	£127,233	£38,095	£165,328	£6,765
ABERSOCH	1	12	£89,040	£37,853	£126,893	£10,200
EDMWND PRYS	1	33	£180,377	£24,132	£204,509	£6,116

Ddim yn cynnwys Ysgol Babanod Coed Mawr gan fod penderfyniad wedi ei wneud i'w gau  
 Ysgol Babanod Coed Mawr not included as a decision has been made to close



# Buddion ysgol newydd / *Benefits of a new school*



# Ysgolion cynradd newydd Gwynedd / *New primary schools in Gwynedd*

Agorwyd 3 ysgol gynradd newydd yng Ngwynedd gyda arian Band A Rhaglen Ysgolion 21ain Ganrif

3 new primary schools were opened in Gwynedd with Band A 21st Century Schools funding

- **Ysgol Bro Llifon, Groeslon**
- **Ysgol Glancegin, Bangor**
- **Ysgol Craig y Deryn, Llanegryn**

# Ysgol Bro Llifon, Groeslon



- Agorwyd yr ysgol hon yn 2015 ac mae hi'n gwasanaethu pentrefi Y Groeslon, Carmel a'r Fron / *The school opened in 2015 servicing the villages of Groeslon, Carmel and Fron*
- Adeiladwyd yr ysgol ar gyfer 150 disgyblion (D-bl6) gyda 22 lle meithrin / *The school was built for 150 pupils (rec-yr6) with 22 nursery places*
- Yn Medi 2018 roedd 134 digyblion Derbyn i Blwyddyn 6 + 21 meithrin ar gofrestr yr ysgol / *In September 2018 there were 134 pupils in reception to year 6 classes and 21 in the nursery class*

# Ysgol Bro Llifon, Groeslon



- Arwynebedd safle ysgol  
8,454m<sup>2</sup> /  
Area of school site 8,454m<sup>2</sup>
- Cost yr ysgol £4.8m /  
*Cost of the school £4.8m*

# Ysgol Bro Llifon, Groeslon



Neuadd fawr efo digon o le ar gyfer defnydd cymunedol tu allan i oriau ysgol/  
*Large hall with enough space for community use outside school hours*

# Ysgol Glancegin, Bangor



- Agorwyd yr ysgol hon yn 2017 /  
*The school opened in 2017*
- Adeiladwyd yr ysgol ar gyfer 280 disgyblion (D-bl6) gyda 30 lle meithrin /*The school was built for 280 pupils (reception – yr6) with 30 nursery places*
- Yn Medi 2018 roedd 220 digyblion Derbyn i Blwyddyn 6 a 34 meithrin ar gofrestr yr ysgol /  
*In September 2018 there were 220 pupils from reception to year 6 and 34 in the nursery class*

# Ysgol Glancegin, Bangor



Cost yr ysgol £5.1m /  
*Cost of the school £5.1m*

# Ysgol Craig y Deryn, Llanegryn



- Agorwyd yr ysgol hon yn 2013 ac mae hi'n gwasanaethu pentrefi Llanegryn, Llwyngwrl a Brynchrug /  
*The school opened in 2013 for pupils from Llanegryn, Llwyngwrl and Brynchrug*
- Adeiladwyd yr ysgol ar gyfer 99 disgyblion (D-bl6) gyda 15 lle meithrin/  
*The school was built for 99 pupils (reception-yr6) with 15 nursery places*
- Yn cyfrifiad Medi 2018 roedd 107 digyblion Derbyn i Blwyddyn 6 a 11 meithrin /  
*In September 2018 there were 107 pupils on the register and 11 in the nursery*

# Ysgol Craig y Deryn, Llanegryn



- Cost yr ysgol  
£4.8m /  
*Cost of the  
school £4.8m*

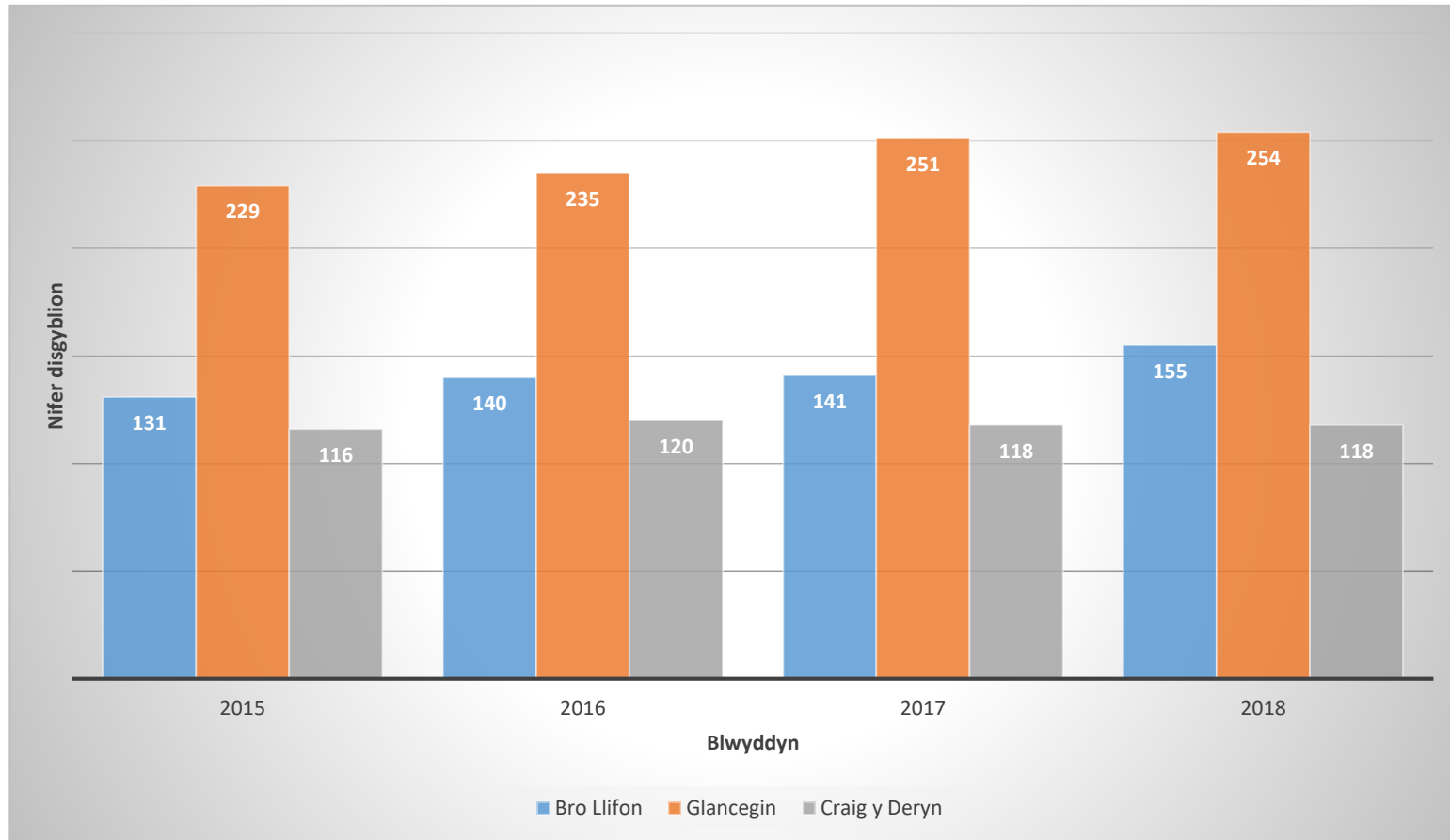


# Ysgol Craig y Deryn, Llanegryn



Neuadd fawr aml-  
bwrpas gyda digon o  
le ar gyfer defnydd  
cymunedol tu allan i  
oriau ysgol /  
*A large hall with  
enough space for  
community use  
outside of school  
hours*

# Cynnydd yn niferoedd y 3 ysgol / Increase in numbers at the 3 schools



# Maint dosbarthiadau posib ar sail capasiti o 140 o ddisgyblion / Possible class sizes based on the capacity of 140 pupils

	Meithrin / Nursery	Derbyn / Reception	BI 1	BI2	BI 3	BI 4	BI 5	BI 6	Cyfanswm / Total
Niferoedd Posib / Possible numbers	14	20	17	16	18	16	17	22	140
Dosbarthiadau Posib / Possible classrooms	14	24			23			22	6 dosbarth/classes
			29			28			

# Dyraniad ysgol newydd yn seiliedig ar niferoedd disgyblion o 140 / *School allocation based on pupil numbers of 140*

Ysgol <i>School</i>	CYLLIDEB / <i>BUDGET</i>			
	Dyraniad / <i>Allocation</i>	Gwarchodaeth lleiafswm staffio* / Minimum staffing protection*	Cyfanswm cyllideb / Total budget	Cyfartaledd y Disgybl / <i>Average per pupil</i>
Ysgol newydd	£453,576	£0	£453,576	£3,432
<b>Cyllideb ysgolion presennol (2019-20) / Present school budgets (2019/20)</b>				
Trefferthyr	£389,431	£0	£389,431	£3,630
Llanystumdwy	£128,422	£51,530	£179,952	£9,052

# Paned a thrafod / Refreshments and discussion

- Cyfle i drafod yr hyn sydd wedi ei gyflwyno /  
*An opportunity to discuss what has been presented*
- Nodwch unrhyw gwestiynau neu sylwadau ar y 'post-its' /  
*Note any questions or comments on the post-it notes*

# Y camau nesaf / Next steps

- **Cyflwyno unrhyw gwestiynau neu sylwadau ychwanegol erbyn 21 Mehefin /**  
*Present any additional questions or comments by 21 June*  
  
**moderneiddioaddysg@gwynedd.llyw.cymru**
- **Cyfarfod i fwydo nôl - 27 Mehefin /**  
*Meeting to present feedback – 27 June*

<b>Cyfarfod o:</b>	Panel Adolygu Lleol Cricieth (1)	<b>Dyddiad:</b> 13/06/2019 6:00 yh
		<b>Lleoliad:</b> Ystafell Werdd Neuadd Goffa Cricieth

<b>Presennol:</b>	<u>Swyddogion:</u>  Gwern ap Rhisiart (GaR); Gareth Jones (GJ); Cyng. Cemlyn Williams (CW); Sioned Hughes (SH).  <u>Ar ran Ysgol Trefferthyr:</u>  Dr Elin Pugh (Cadeirydd Llywodraethwyr Ysgol Trefferthyr); Dafydd Martyn Williams (Rhiant Llywodraethwr Ysgol Trefferthyr); Bethan Williams (Rhiant Llywodraethwr Ysgol Trefferthyr); Karena Owens (Pennaeth Ysgol Trefferthyr); Angela Hughes (Llywodraethwr Ysgol Trefferthyr); Cyng. Eirwyn Williams (Llywodraethwr Ysgol Trefferthyr).  <u>Ar ran Ysgol Llanystumdwy:</u>  Canon Dylan Williams (Cadeirydd Llywodraethwyr Ysgol Llanystumdwy); Cathryn Davey (Pennaeth ysgol Llanystumdwy); Matt Bentley (Rhiant Llywodraethwr Ysgol Llanystumdwy); Cyng. Aled Evans (Llywodraethwr Ysgol Llanystumdwy).  <u>Ar ran yr Eglwys:</u>  Anest Gray Frazer; Tracy Richardson Jones.
<b>Ymddiheuriadau:</b>	

Crynodeb weithredol (Nodi pwyntiau gweithredu o'r cyfarfod, a nodi unrhyw bwyntiau sydd angen eu cyfathrebu i fforwm arall; gan bwy, erbyn pryd)				
Rhif Eitem	Eitem / Pwnc	Gweithrediad	Gan	Erbyn
1.	Croeso	<ul style="list-style-type: none"> <li>Croesawyd pawb i'r cyfarfod gan y Cyng. Cemlyn Williams yr Aelod Cabinet dros Addysg.</li> <li>Gofynnwyd i bawb gyflwyno eu hunain a'u dyletswyddau.</li> <li>Eglurwyd y bydd Swyddogion Addysg yn ceisio ateb unrhyw gwestiynau yn ystod y cyfarfod ond y bydd cyfle hefyd i gyflwyno cwestiynau yn ysgrifenedig gan na fydd modd ateb pob cwestiwn yn ystod y cyfarfod.</li> <li>Nodwyd y byddai'r pwyntiau sy'n codi ac unrhyw gwestiynau a ofynnir nas atebwyd yn cael eu hateb erbyn y cyfarfod Panel Adolygu nesaf.</li> </ul>		
2.	Briff Panel Adolygu Lleol a Rhaglen Waith	<ul style="list-style-type: none"> <li>Eglurwyd bwrpas y Panel sef i symud y gwaith ymlaen ac i drafod ymhellach y strategaethau a'r opsiynau posib ar gyfer adeiladu ysgol newydd yng Nghricieth.</li> <li>Amlygwyd rôl y Swyddogion Addysg yn y gwaith o arwain y prosiect.</li> <li>Trafodwyd yr amserlen ar gyfer y cyfarfodydd PAL sydd i ddilyn a beth fydd cynnwys y cyfarfodydd.</li> </ul>		
3.	Cyflwyniad Power Point	<ul style="list-style-type: none"> <li>Rhoddyd eglurhad o gefndir y prosiect a soniwyd am gyflwr Ysgol Trefferthyr a'r angen am ysgol newydd.</li> </ul>		

		<ul style="list-style-type: none"> <li>• Aethpwyd ymlaen i drafod niferoedd plant yn nalgylch Ysgol Trefferthyr.</li> <li>• Eglurwyd fod Asesiadau Estyn a Llywodraeth Cymru Ysgol Trefferthyr ac Ysgol Llanystumdwy yn dda.</li> <li>• Cyflwynwyd ystod oedran disgyblion mewn dosbarthiadau yn y ddwy ysgol ac edrychwyd ar ragamcanion cyfanswm nifer y disgyblion yn yr ysgolion o 2018 hyd at 2022.</li> <li>• Aethpwyd ymlaen i gyflwyno cyllidebau Ysgol Trefferthyr ac Ysgol Llanystumdwy. Amlygwyd y gost gwarchodaeth lleiafswm staffio ar gyllideb fesul disgybl yn Ysgol Llanystumdwy.</li> <li>• Cyflwynwyd buddion ysgol newydd gan edrych ar Ysgol Bro Lliffon, Y Groeslon, Ysgol Glancegin, Bangor ac Ysgol Craig y Deryn, Llanegryn. Dangoswyd lluniau o'r ysgolion newydd yma a'r adnoddau tu mewn a tu allan ar gyfer y disgyblion ac at ddefnydd cymunedol.</li> <li>• Trafodwyd fod niferoedd y disgyblion yn yr ysgolion newydd hyn wedi cynyddu yn raddol bob blwyddyn. Dangoswyd enghraifft o faint dosbarthiadau posib ar sail ysgol newydd yn nalgylch Trefferthyr.</li> <li>• Nodwyd y dyraniad mewn ysgol newydd yn seiliedig ar niferoedd disgyblion o 140. Cymharwyd y gyllideb newydd yma i'r ddwy ysgol fel ag y maent ar hyn o bryd.</li> <li>• Ar ddiwedd y cyflwyniad aeth aelodau'r panel ati mewn grwpiau i nodi cwestiynau ar bapur ar gyfer eu cyflwyno yn nes ymlaen yn y cyfarfod.</li> </ul>		
4.	<b>Trafodaeth</b>	<ul style="list-style-type: none"> <li>• Cafwyd trafodaeth fer yn dilyn y cyflwyniad.</li> <li>• Gwnaed sylw gan yr Eglwys nad oeddynt yn glir sut y gallent wneud penderfyniad i barhau yn rhan o'r trafodaethau os nad oes opsiynau iddynt eu hystyried. Cynigwyd y byddai'n rhaid gwneud mwy o waith ar hyn a dod yn ôl atynt gyda ymateb erbyn y cyfarfod nesaf.</li> <li>• Gofynnwyd beth fyddai statws Ysgol Trefferthyr pe buasai Ysgol Llanystumdwy yn parhau yn rhan o'r trafodaethau. Eglurwyd y byddai hynny yn cael ei drafod ymhellach yn y trydydd cyfarfod os fydd Llanystumdwy yn penderfynu parhau ac y bydd opsiynau posibl yn cael eu cynnig bryd hynny.</li> <li>• Nodwyd fod yr aelodau presennol o Ysgol Llanystumdwy yn rhan o'r trafodaethau cychwynol yn wirfoddol.</li> <li>• Nodwyd y byddai'r Swyddogion Addysg yn mynd ati i ymchwilio a pharatoi ar gyfer yr ail gyfarfod gyda atebion i'r cwestiynau sy'n cael eu cyflwyno.</li> </ul>	GaR, GJ	27/06/19
5.	<b>Cwestiynau i'w ateb ar gyfer y cyfarfod nesaf</b>	<p>Dyma'r cwestiynau a gyflwynwyd yn ystod y cyfarfod. Bwriedir dychwelyd i'r ail gyfarfod gyda'r atebion.</p> <ol style="list-style-type: none"> <li>1. Os fydd Ysgol Llanystumdwy yn ymuno yn y cyfarfodydd PAL a fydd Ysgol Trefferthyr yn parhau i fod fel ag y mae? Os ddim, beth fydd yr oblygiadau i staff Trefferthyr?</li> </ol>	GaR, GJ	27/06/19



		<p>2. Os yw Llanystumdwy yn ymrwymo i barhau gyda'r trafodaethau, beth yw goblygiadau pleidleisio dros safle ayyb a chysidro niferoedd y ddwy ysgol?</p> <p>3. Gan fod Ysgol Llanystumdwy yn Ysgol Eglwysig beth fydd y drefn?</p> <p>4. Beth sydd wedi digwydd i ysgolion cyfagos i Bro Lliffon ac i'r pentrefi cyfagos? Pa astudiaethau sydd wedi ei wneud ar hyn?</p> <p>5. Faint o bwys a roddir ar gymuned bentrefol a'i pharhad i'r dyfodol wrth wneud penderfyniadau o'r fath? Oes yna fesur ar gael?</p> <p>6. Pam nad oes modd dweud beth mae ysgol newydd yn ei gyflawni? Beth yw'r broblem?</p> <p>7. Sut y gall y Corff Eglwysig benderfynu parhau yn rhan o'r trafodaethau heb syniad o weledigaeth ac opsiynau ar gyfer ysgol newydd?</p> <p>8. Os mai rhagolwg ar gyfer 6 dosbarth sydd ar gyfer yr ysgol newydd yna pam ddim sicrhau swyddi Ysgol Llanystumdwy? (Does dim 6 athro/athrawes llawn amser yn Nhrefferthyr)</p> <p>9. Pe buasai'r cynllun yn mynd yn ei flaen sut fyddai sicrhau bod cefndir diwylliannol ardal Llanystumdwy yn cael ei gynnwys yn llawn?</p> <p>10. Beth yw'r rheoliadau ychwanegol penodol sy'n rhaid eu dilyn os ydym (Ysgol Llanystumdwy) yn penderfynu parhau fel rhan o'r broses h.y ydi'r corff llywodraethol yn cael gwneud penderfyniad ynteu ydi o'n fater canolog?</p>		
6.	<b>Dyddiad a Lleoliad Cyfarfod Nesaf</b>	<ul style="list-style-type: none"> <li>Bwriedir cynnal cyfarfod Panel Adolygu Lleol nesaf nos lau, Mehefin 27ain am 6:00pm yn yr Ystafell Werdd, Neuadd Goffa Cricieth.</li> </ul>		

# Cricieth Local Review Panel Meeting

Addysg

<b>Meeting of:</b>	Cricieth Local Review Panel (1)	<b>Date:</b> 13/06/2019 6 p.m.
		<b>Venue:</b> Green Room, Cricieth Memorial Hall

<b>Present:</b>	<p><u>Officers:</u></p> <p>Gwern ap Rhisiart (GaR); Gareth Jones (GJ); Cllr Cemlyn Williams (CW); Sioned Hughes (SH).</p> <p><u>Representing Ysgol Trefferthyr:</u></p> <p>Dr Elin Pugh (Chair of Governors, Ysgol Trefferthyr); Dafydd Martyn Williams (Parent Governor, Ysgol Trefferthyr); Bethan Williams (Parent Governor, Ysgol Trefferthyr); Karena Owens (Head of Ysgol Trefferthyr); Angela Hughes (Governor, Ysgol Trefferthyr); Cllr Eirwyn Williams (Governor, Ysgol Trefferthyr).</p> <p><u>Representing Ysgol Llanystumdwy:</u></p> <p>Canon Dylan Williams (Chair of Governors, Ysgol Llanystumdwy); Cathryn Davey (Head of Ysgol Llanystumdwy); Matt Bentley (Parent Governor, Ysgol Llanystumdwy); Cllr Aled Evans (Governor, Ysgol Llanystumdwy).</p> <p><u>Representing the Church:</u></p> <p>Anest Gray Frazer; Tracy Richardson Jones.</p>
<b>Apologies:</b>	

## Executive summary

*(Note action points from the meeting, and note any points that need to be communicated to another forum; by whom, when)*

Item No.	Item/Subject	Action	By whom	When
1.	Welcome	<ul style="list-style-type: none"> <li>Cllr Cemlyn Williams, Cabinet Member for Education, welcomed everyone to the meeting.</li> <li>All were asked to introduce themselves and state their role.</li> <li>It was explained that the Education Officers would attempt to answer any questions during the meeting but that there would also be an opportunity to submit written questions as it would not be possible to answer every question during the meeting.</li> <li>It was noted that points arising, and any questions asked but not answered, would be answered for the next Review Panel meeting.</li> </ul>		
2.	Local Review Panel Brief and Work Programme	<ul style="list-style-type: none"> <li>The purpose of the Panel was explained, namely to move the work forward and conduct further discussions on possible strategies and options for building a new school in Cricieth.</li> <li>The role of the Education Officers in the work of leading the project was highlighted.</li> </ul>		

Parch • Gwasanaethu • Positif • Gweithio fel tîm • Gwerth am arian  
 Respect • Serving • Positive • Working as a team • Value for money

[www.gwynedd.gov.uk](http://www.gwynedd.gov.uk)



		<ul style="list-style-type: none"> <li>The timetable for upcoming LRP meetings and the proposed content of the meetings were discussed.</li> </ul>		
3.	PowerPoint Presentation	<ul style="list-style-type: none"> <li>An explanation was provided on the background to the project and reference made to the condition of Ysgol Trefferthyr and the need for a new school.</li> <li>The number of children in the catchment area of Ysgol Trefferthyr was then discussed.</li> <li>It was explained that Estyn and Welsh Government Assessments of Ysgol Trefferthyr and Ysgol Llanystumdwy were good.</li> <li>The age range of pupils in classes in both schools was presented and the estimated total number of pupils in the schools from 2018 to 2022 considered.</li> <li>The budgets for Ysgol Trefferthyr and Ysgol Llanystumdwy were presented. The minimum staffing protection cost and budget per pupil at Ysgol Llanystumdwy were highlighted.</li> <li>The benefits of a new school were presented, with reference to Ysgol Bro Llifon, Y Groeslon, Ysgol Glancegin, Bangor and Ysgol Craig y Deryn, Llanegryn. Photographs of these new schools were shown as well as the resources inside and outside for the pupils and for community use.</li> <li>It was stated that the number of pupils at these new schools had increased gradually every year. An example was shown of the size of possible classes based on a new school in the catchment area of Trefferthyr.</li> <li>The allocation in a new school based on pupil numbers of 140 was noted. This new budget was compared with the two schools as they are at present.</li> <li>At the end of the presentation, in groups, members of the panel set about noting down questions on paper for submission later in the meeting.</li> </ul>		
4.	Discussion	<ul style="list-style-type: none"> <li>A brief discussion took place following the presentation.</li> <li>The Church commented that it was not clear to them how they could take the decision to remain part of the discussions if there were no options for them to consider. It was proposed that more work would have to be done on this and to come back to them with a response by the next meeting.</li> <li>It was asked what the status of Ysgol Trefferthyr would be if Ysgol Llanystumdwy remained part of the discussions. It was explained that this would be discussed further at the third meeting if Llanystumdwy decide to remain and that possible options would be proposed at that time.</li> <li>It was noted that the members present from Ysgol Llanystumdwy were involved in the initial discussions on a voluntary basis.</li> <li>It was noted that the Education Officers would set about researching and preparing for the second meeting with answers to the questions being submitted.</li> </ul>	GaR, GJ	27/06/19

5.	<b>Questions to be answered for the next meeting</b>	<p>Here are the questions submitted during the meeting. The intention is to return to the second meeting with answers.</p> <ol style="list-style-type: none"> <li>1. If Ysgol Llanystumdwy joins in LRP meetings, will Ysgol Trefferthyr remain as it is now? If not, what are the implications for the staff of Trefferthyr?</li> <li>2. If Llanystumdwy commits to continuing with discussions, what are the implications of voting for a site, etc. bearing in mind the numbers in both schools?</li> <li>3. As Ysgol Llanystumdwy is a Church School, what will the procedure be?</li> <li>4. What has happened to schools near Bro Llifon and to the neighbouring villages? What studies have been carried out on this?</li> <li>5. How much importance is attached to a village community and its future existence when taking such decisions? Is there a benchmark available?</li> <li>6. Why is it not possible to state what a new school achieves? What's the problem?</li> <li>7. How can the Church Body decide whether to remain part of the discussions with no idea of a vision and options for a new school?</li> <li>8. If six classes are anticipated for the new school then why not secure Ysgol Llanystumdwy jobs? (There aren't six full-time teachers at Trefferthyr.)</li> <li>9. If the scheme proceeds, how would it be ensured that the cultural background of the Llanystumdwy area is included in full?</li> <li>10. What are the specific additional regulations that have to be followed if we (Ysgol Llanystumdwy) decide to remain part of the process, i.e. is the governing body allowed to make a decision or is it a central matter?</li> </ol>	GaR, GJ	27/06/19
6.	<b>Date and Venue of the Next Meeting:</b>	<ul style="list-style-type: none"> <li>• It is intended to hold the next meeting of the Local Review Panel on Thursday evening, 27th June at 6 p.m. in the Green Room, Cricieth Memorial Hall.</li> </ul>		

---

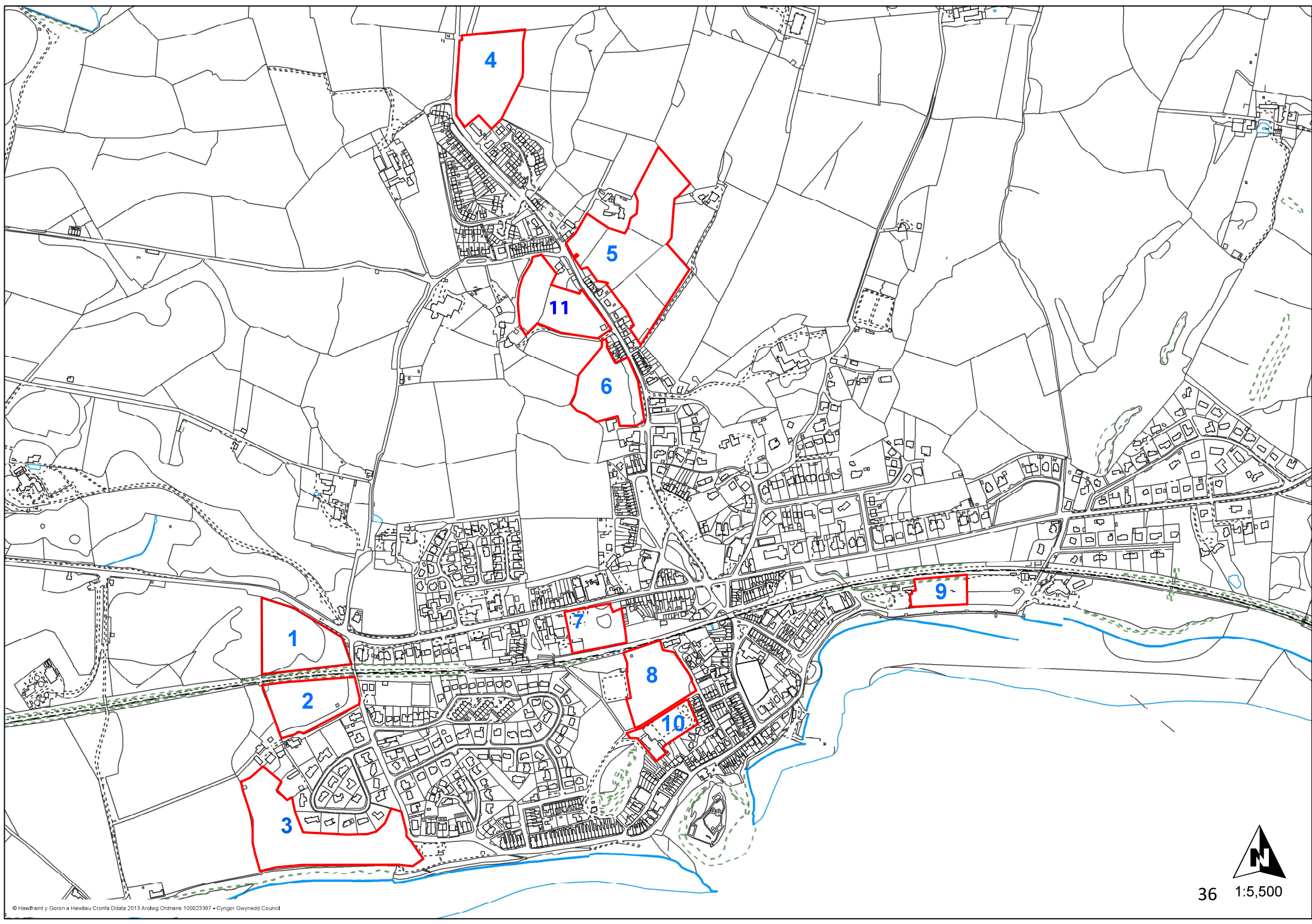
### Panel Adolygu Lleol 2 Local Review Panel 2

18:00 Dydd Mercher, 9 Hydref 2019  
18:00 Wednesday, 9 October 2019

Ysgol Trefferthyr, Cricieth

---

- 1. Croeso ac ymddiheuriadau**  
Welcome and apologies
- 2. Cofnodion cyfarfod PAL1**  
**(Cofnodion a cwestiynau ac atebion)**  
Minutes of LRP 1  
(Minutes and Q&As)
- 3. Diweddariad yn dilyn cyfarfod PAL1**  
Update following LRP 1
- 4. Safleoedd**  
**(Matrics a map safleoedd)**  
Sites  
(Matrix and location map)
- 5. Dyddiad y cyfarfod nesaf**  
Date of next meeting



**2. Aseiad rhestr hir o safleoedd**

	<b>SAFLE</b>	<b>MAINT</b> Angen safle <b>8,270 – 11,170m<sup>2</sup></b>	<b>CYNLLUNIO</b>	<b>TRAFFIG</b>	<b>TECHNEGOL</b>	<b>Effaith ar y costau datblygu</b>
<b>1.</b>	<b>Safle A497</b>	<ul style="list-style-type: none"> <li>• 16,500m<sup>2</sup></li> <li>• Digon mawr</li> </ul>	<ul style="list-style-type: none"> <li>• tu allan i'r ffin datblygu (-)</li> <li>• gorchymyn gwarchod coed 3/TPO/D2 ar y safle gyfan (-)</li> <li>• rhan o'r safle wedi ei ddynodi fel safle bywyd gwylt (-)</li> </ul>	<ul style="list-style-type: none"> <li>• Safle'n ymylu a'r A497 ar gyrion y dref a tu hwnt i pellter cerdded resymol i llawer o'r dref (-)</li> <li>• Mae'r safle tu hwnt i'r cyfyngiad 30m.y.a ac mae'r troedffordd yn darfod cyn cyrraedd y safle (-)</li> </ul>	<ul style="list-style-type: none"> <li>• Cae gweddol wastad (+)</li> <li>• Gwahaniaeth lefel rhwng y ffordd a'r safle (-)</li> <li>• Coed aeddfed (-)</li> </ul>	<ul style="list-style-type: none"> <li>• Tir preifat - Mi fydd angen prynu y tir ar gyfer safle'r ysgol</li> <li>• Safle gwyrdd heb trydan na nwy felly cost ychwanegol creu cyflenwad.</li> </ul>

			<ul style="list-style-type: none"> <li>• ymylu gyda llinell rheilffordd (-)</li> </ul>	<ul style="list-style-type: none"> <li>• Angen creu palmant newydd ar gyfer cyrraedd y safle ar droed (-)</li> <li>• Angen darpariaeth parcio digonol o fewn y safle i leihau risg o rieni'n parcio ar yr A497, mewn lleoliad cyflym ac ar ddechrau troad yn y ffordd (-)</li> <li>• Mi fydda angen sicrhau digon o le parcio a gollwng plant ar y safle er mwyn i rhieni fedru dod oddi ar y ffordd fawr i ollwng a chasglu plant</li> </ul>	<ul style="list-style-type: none"> <li>• Digon o le i ddatblygu mynedfa (+)</li> <li>• Ffin hir a'r briffordd (+)</li> <li>• Prif bibell dwr yn rhedeg wrth y ffordd ar rhan o'r safle (-)</li> </ul> <p><b>Sylwadau Pensaer</b></p> <ul style="list-style-type: none"> <li>• Angen ail-leoli gwifrau trydan dros ben</li> <li>• Goledd rhwng ffordd a maes parcio ar safle</li> </ul>	
2.	<b>Tir tu ôl i Muriau (wrth pont y rheilffordd)</b>	<ul style="list-style-type: none"> <li>• 11,500m<sup>2</sup></li> <li>• Digon mawr</li> </ul>	<ul style="list-style-type: none"> <li>• tu allan ond yn ymylu gyda'r ffin datblygu (-)</li> <li>• ymylu gyda safle gorchymyn gwarchod coed (-)</li> <li>• ymylu gyda llinell rheilffordd (-)</li> <li>• rhan wedi ei ddynodi fel safle bywyd gwylt (-)</li> </ul>	<ul style="list-style-type: none"> <li>• Safle'n ymylu a Lon Fel, sef ffordd gul sengl heb troedffyrdd na chyfleuon parcio wrth ymyl (-)</li> <li>• Sgop i ledaenu'r ffordd ar ymyl y safle ond tydi hynny ddim yn goresgyn y broblem o ffordd cul dros y pont, a'r diffyg llwybrau troed lleol (-)</li> </ul>	<ul style="list-style-type: none"> <li>• Tir ddim mor wastad (-)</li> <li>• Ffin fyr o'r lon (-)</li> <li>• Anodd creu mynedfa (-)</li> </ul>	<ul style="list-style-type: none"> <li>• Tir preifat - Mi fydd angen prynu y tir ar gyfer safle'r ysgol</li> </ul>



3.	<b>Tir wrth Y Dryll</b>	<ul style="list-style-type: none"> <li>• 24,000m<sup>2</sup></li> <li>• Digon mawr</li> </ul>	<ul style="list-style-type: none"> <li>• tu allan ond yn ymylu gyda'r ffin datblygu (-)</li> <li>• rhannol o fewn ardal wedi ei ddynodi fel byffer gwarchod heneb gofrestredig (-)</li> <li>• ymylu gyda dynodiad ardaloedd cadwraeth SAC a SSSI (-)</li> <li>• agos i ddynodiad ardal rheoli newid arfordirol (-)</li> <li>• agos i barth llifogydd C2 (-)</li> </ul>	<ul style="list-style-type: none"> <li>• diffyg llwybrau troed o gyfeiriad Lon Fel a West Parade, a diffyg 'frontage' gyda'r briffordd ar gyfer parcio (-)</li> <li>• Risg byddai rhieni'n dewis parcio yn y maes parcio cyfagos (-)</li> <li>• Safle'n bell o canol y dre (-)</li> </ul>	<ul style="list-style-type: none"> <li>• Tir gwastad (+)</li> <li>• Tir wrth clogwyn i'r mor (erydiad) (-)</li> <li>• Maes parcio wrth y cae yn barod (+)</li> </ul>	<ul style="list-style-type: none"> <li>• Tir preifat - Mi fydd angen prynu y tir ar gyfer safle'r ysgol</li> </ul>
4.	<b>Tir ochr draw i Waen Helyg</b>	<ul style="list-style-type: none"> <li>• 15,800m<sup>2</sup></li> <li>• Digon mawr</li> </ul>	<ul style="list-style-type: none"> <li>• Tu allan ond ymylu gyda'r ffin datblybu (-)</li> </ul>	<ul style="list-style-type: none"> <li>• Safle'n bell o ganol y dref (-)</li> <li>• Diffyg llwybrau troed yn uniongyrchol o flaen y safle ond modd darparu llwybrau a croesfan i gysylltu a'r rhwydwaith presenol o flaen stad Ty'n Rhos.</li> </ul>	<ul style="list-style-type: none"> <li>• Tir gwastad (+)</li> <li>• Ffin hir a'r briffordd (+)</li> <li>• Hawdd creu mynediad (+)</li> <li>• Pibellau nwy yn rhedeg drwy'r tir (-)</li> </ul>	<ul style="list-style-type: none"> <li>• Tir preifat - Mi fydd angen prynu y tir ar gyfer safle'r ysgol</li> </ul>

5.	<b>Safle Cefniwrch (Cefniwrch a Cefniwrch Bach)</b>	<ul style="list-style-type: none"> <li>• 20,600m<sup>2</sup> + 11,060m<sup>2</sup></li> <li>• Digon mawr</li> <li>• Safle yn ddibynnol ar gaeau Cefniwrch a Cefniwrch Bach er mwyn sicrhau hawl cynllunio</li> </ul>	<ul style="list-style-type: none"> <li>• Tu allan ond ymylu gyda'r ffin datblygu (-)</li> <li>• Tai o amgylch y safle (-)</li> <li>• Safle reit uchel felly posib gweld yr ysgol o waelodion Cricieth a phellach (-)</li> <li>• Dros ffordd i dir wedi ei ddynodi yn benodol fel safle ar gyfer codi tai newydd (+)</li> </ul>	<ul style="list-style-type: none"> <li>• Safle eithaf canolog, gyda troedffyrdd naill ochr i'r ffordd (+)</li> <li>• System tawelu traffig ar y ffordd cyfagos yn barod (+)</li> <li>• Frontage cul gyda'r ffordd ac felly bydda angen darparu lle parcio a troi boddhaol o fewn y safle i leihau'r effaith parcio ar y ffordd cyfagos.</li> <li>• Trigolion lleol yn parcio ar hyd rhan o'r frontage felly ystyried darpariaeth arall iddyn nhw fel rhan o'r datblygiad.</li> <li>• Ffordd troellog, cyfle i ostwng cyflymder i 20 m.y.a</li> <li>• Ffordd gymharol ddistaw i gymharu a'r A487</li> </ul>	<ul style="list-style-type: none"> <li>• Goledd yn y tir (-)</li> <li>• Is-orsaf drydan gerllaw (+)</li> <li>• Angen ail-leoli gwifrau trydan dros ben</li> <li>• Caeau bach a ffiniau caeau planhigion aeddfed yn golygu gorfod rhannu y cynllun dros gwahanol gaeau</li> <li>• Ddim llawer o doriadau rhwng dyfiant yn rheoli ble ellir leoli ffordd mynediad a cysylltiadau rhwng parcio, adeiladau ac adnoddau</li> <li>• Tai yn cefnu ar y safle</li> <li>• Dim cysylltiad gwasanaethau</li> <li>• Hen bibell nwy ar y safle (abandoned) gall greu anhawster ac oedi os mae hawliau neu "easement" yn dal i fodoli</li> </ul>	<ul style="list-style-type: none"> <li>• Tir preifat - Mi fydd angen prynu y tir ar gyfer safle'r ysgol</li> <li>• 2 darn tir ym mherchnogaeth nifer o berchnogion</li> </ul>
----	-----------------------------------------------------	----------------------------------------------------------------------------------------------------------------------------------------------------------------------------------------------------------------------	--------------------------------------------------------------------------------------------------------------------------------------------------------------------------------------------------------------------------------------------------------------------------------------------------------------------------------	------------------------------------------------------------------------------------------------------------------------------------------------------------------------------------------------------------------------------------------------------------------------------------------------------------------------------------------------------------------------------------------------------------------------------------------------------------------------------------------------------------------------------------------------------------------------------------------------------------	------------------------------------------------------------------------------------------------------------------------------------------------------------------------------------------------------------------------------------------------------------------------------------------------------------------------------------------------------------------------------------------------------------------------------------------------------------------------------------------------------------------------------------------------------------------------------------------------------------------------------------	-------------------------------------------------------------------------------------------------------------------------------------------------------------------------------

6.	<b>Tir tu ôl i Regent Garage</b>	<ul style="list-style-type: none"> <li>• 11,300m<sup>2</sup></li> <li>• Digon mawr i ddatblygiad o'r maint yma</li> </ul>	<ul style="list-style-type: none"> <li>• tu mewn i'r ffin datblygu ond wedi ei ddynodi yn benodol fel safle ar gyfer codi tai newydd (-)</li> </ul>	Safle mewn lleoliad canolog gyda troedffyrdd naill ochr.	<ul style="list-style-type: none"> <li>• Goledd yn y tir (-)</li> <li>• Ffin hir a'r briffordd (+)</li> </ul>	<ul style="list-style-type: none"> <li>• Tir preifat - Mi fydd angen prynu y tir ar gyfer safle'r ysgol</li> <li>• Wedi ei ddynodi yn benodol fel safle ar gyfer codi tai newydd felly cost prynu tir yn debygol o fod yn ddrud iawn</li> </ul>
7.	<b>Maes storio carafanau Station Bakery</b>	<ul style="list-style-type: none"> <li>• 4,500m<sup>2</sup></li> <li>• Dim digon mawr</li> </ul>	<ul style="list-style-type: none"> <li>• tu mewn i'r ffin datblygu (+)</li> <li>• rhannol o fewn ardal gadwraeth (-)</li> <li>• tu mewn i ardal byffer heneb gofrestredig (-)</li> <li>• yn ymylu/agos i adeiladau rhestredig</li> <li>• yn ymylu gyda llinell rheilffordd (-)</li> <li>• yn rhannol o fewn safle sydd wedi derbyn caniatâd cynllunio yn ddiweddar ar gyfer datblygiad preswyl (--)</li> </ul>	<ul style="list-style-type: none"> <li>• Safle'n cynnwys rhan o faes parcio a coach park y Cyngor (-)</li> <li>• Mynediad anodd; angen mynd unai trwy gweddill y maes parcio neu o fynediad newydd o'r lon fawr (-)</li> <li>• Peryg byddai ysgol fan hyn yn arwain at camddefnydd maes parcio fel drop-off / pick up area.</li> </ul>	<ul style="list-style-type: none"> <li>• Tir gwastad (+)</li> <li>• Maes parcio wrth y safle yn barod (+)</li> </ul>	<ul style="list-style-type: none"> <li>• Tir preifat - Mi fydd angen prynu y tir ar gyfer safle'r ysgol</li> </ul>

8.	<b>Golff Bach</b>	<ul style="list-style-type: none"> <li>• 11,500<sup>2</sup></li> <li>• Digon mawr</li> </ul>	<ul style="list-style-type: none"> <li>• tu mewn i'r ffin datblygu (+)</li> <li>• ymylu gyda ffin ardal cadwraeth (-)</li> <li>• tu mewn i ardal byffer heneb gofrestredig (-)</li> <li>• yn ymylu gyda llinell rheilffordd (-)</li> <li>• safle gyfan o fewn dynodiad llecyn agored (-)</li> <li>• cae chwarae wedi gwarchod (Cyfamod ar y tir) (--)</li> <li>• Anhebygol iawn o gael caniatad cynllunio (--)</li> </ul>	<ul style="list-style-type: none"> <li>• Mynediad yn anodd (trwy stad preswyl) (-)</li> <li>• Mynediad ar gyfer gwaith adeiladu a rheoli traffig yn anodd iawn yn ystod cyfnod adeiladu (-)</li> <li>• Potensial o mwy o ddisgyblion yn cynyddu y broblem traffig i'r ysgol (-)</li> </ul>	<ul style="list-style-type: none"> <li>• Tir gwastad (+)</li> <li>• Dim gwasanaethau ar y safle (-)</li> <li>• Draen cyhoeddus yn rhedeg dan y tir (-)</li> </ul>	<ul style="list-style-type: none"> <li>• Tir ym mherchnogaeth y Cyngor - Cyfamod ar y tir (defnydd hamdden)</li> <li>• Costau creu mynedfa dros dro ar draws y rheilffordd ar gyfer gwaith datblygu safle</li> <li>• Costau creu mynedfa parhaol dros/ar draws y rheilffordd ar gyfer disgyblion/staff</li> </ul>
9.	<b>Tir wrth 'Dylans'</b>	<ul style="list-style-type: none"> <li>• 4,000m<sup>2</sup></li> <li>• Dim digon mawr</li> </ul>	<ul style="list-style-type: none"> <li>• tu allan i'r ffin datblygu (--)</li> <li>• mwyafrif o fewn ardal wedi ei ddynodi fel byffer gwarchod heneb gofrestredig (-)</li> <li>• agos i ddynodiad ardal rheoli newid arfordirol (--)</li> <li>• agos i barth llifogydd (--)</li> </ul>	<ul style="list-style-type: none"> <li>• Pell o pob man (-)</li> <li>• Cyfagos a faes parcio a'r esplanade, sef atyniadau i ymwelwyr (a sipsiwns ar adegau o'r flwyddyn) (-)</li> <li>• Diffyg llwybrau troed i gysylltu a gweddill y dref (-)</li> <li>• Trefn unffordd dros y croesfan rheilffordd sy'n</li> </ul>	<ul style="list-style-type: none"> <li>• Tir gwastad (+)</li> <li>• Maes parcio wrth y safle (+)</li> </ul>	<b>Tir ym mherchnogaeth y Cyngor</b>

				golygu fod rhaid gadael yn ol am gyfeiriad sgwar y dref (-)		
10	Safle presennol Ysgol Trefertyr	<ul style="list-style-type: none"> <li>• 5,200m<sup>2</sup></li> <li>• Dim digon mawr</li> </ul>		<ul style="list-style-type: none"> <li>• Mynediad yn anodd iawn (trwy stad preswyl) (-)</li> <li>• Potensial fydd mwy o ddisgyblion* yn cynyddu y broblem traffig i'r ysgol (-)</li> </ul> <p>(*Mwy o ddisgyblion o ganlyniad i tai newydd a plant yn dychwelyd i'r dalgylch)</p>	<ul style="list-style-type: none"> <li>• Goledd yn y tir (-)</li> <li>• Ysgol weithredol ar y safle yn barod (+)</li> <li>• Mynediad i'r safle yn barod (+)</li> <li>• Gwasanaethau ar y safle yn barod (+)</li> <li>• Diffyg lle ar gyfer datblygu parcio cyffredinol (-)</li> <li>• Dim lle ar gyfer rheolaeth traffig e.e 'drop off'(-)</li> <li>• Mynediad ar gyfer gwaith adeiladu a rheolaeth traffig yn anodd iawn yn ystod cyfnod adeiladu (-)</li> </ul>	Tir ym mherchnogaeth y Cyngor
11.	Safle Capel Uchaf	<ul style="list-style-type: none"> <li>• 13,090m<sup>2</sup></li> <li>• Digon mawr</li> </ul>	<ul style="list-style-type: none"> <li>• Mae'r safle yma y_tu allan i'r ffin datblygu, ond mae sribyn o'r tir sy'n ymylu gyda'r B4411 yn ymddangos oddi mewn (mae'n ymddangos fod hawddfrait (easement) ar y sribyn yma)</li> </ul>	<ul style="list-style-type: none"> <li>• Safle eitha canolog, gyda troedffyrdd nail ochr i'r ffordd (+)</li> <li>• System tawelu traffig ar y ffordd cyfagos yn barod (+)</li> <li>• Frontage cul gyda'r ffordd ac felly bydda angen darparu lle</li> </ul>	???????	<ul style="list-style-type: none"> <li>• Tir preifat - Mi fydd angen prynu y tir ar gyfer safle'r ysgol</li> <li>• Safle gwyrdd heb trydan na nwy felly cost ychwanegol creu cyflenwad.</li> </ul>

			<ul style="list-style-type: none"> <li>• mae'n ymddangos fod cwrs dŵr hefyd yn rhedeg trwy'r sribyn yma. Posib bydd angen trwydded CNC i ddatblygu dros cwrs dwr.</li> <li>• Posiblwydd o llifogydd angen ei ystyried</li> <li>• Mae nifer o goed ar y safle, er nid ydynt yn ymddangos o fod yn destun gorchymyn gwarchod</li> <li>• Angen ystyried unrhyw effaith ar fwynderau preswyl trigolion y tai cyfagos</li> </ul>	<p>parcio a troi boddhaol o fewn y safle i lleihau'r effaith parcio ar y ffordd cyfagos.</p> <ul style="list-style-type: none"> <li>• Trigolion lleol yn parcio ar hyd rhan o'r frontage felly ystyried darpariaeth arall iddyn nhw fel rhan o'r datblygiad.</li> <li>• Ffordd troellog, cyfle i ostwng cyflymder i 20 m.y.a</li> <li>• Ffordd gymharol ddistaw i gymharu a'r A487</li> </ul>		
--	--	--	-----------------------------------------------------------------------------------------------------------------------------------------------------------------------------------------------------------------------------------------------------------------------------------------------------------------------------------------------------------------------------------------------------------------------------	-----------------------------------------------------------------------------------------------------------------------------------------------------------------------------------------------------------------------------------------------------------------------------------------------------------------------------------------------------------------------------------------------	--	--

2. Sites' longlist assessment

	SITE	SIZE Need for a site 8,270 – 11,170m <sup>2</sup>	PLANNING	TRAFFIC (sites 1 and 5 information updated 30.7.19)	TECHNICAL	Impact on development costs
1.	A497 Site	<ul style="list-style-type: none"> <li>• 16,500m<sup>2</sup></li> <li>• Sufficiently large</li> </ul>	<ul style="list-style-type: none"> <li>• outside the development boundary (-)</li> <li>• A tree preservation order 3/TPO/D2 on the entire site (-)</li> <li>• part of the site designated a wildlife site (-)</li> </ul>	<ul style="list-style-type: none"> <li>• The site borders the A497 on the outskirts of the town and is beyond reasonable walking distance to many parts of the town (-)</li> <li>• The site is beyond the 30 mph restriction and the footway ends before reaching the site (-)</li> </ul>	<ul style="list-style-type: none"> <li>• A comparatively level field (+)</li> <li>• A difference in level between the road and site (-)</li> <li>• Mature trees (-)</li> </ul>	<ul style="list-style-type: none"> <li>• Private land - The land will need to be bought for the school site</li> <li>• A greenfield site without electricity or gas therefore</li> </ul>

			<ul style="list-style-type: none"> <li>bordering the railway line (-)</li> </ul>	<ul style="list-style-type: none"> <li>A need to create a new pavement to reach the site on foot (-)</li> <li>A need for adequate parking provision within the site to reduce the risk of parents parking on the A497, in a high-speed location and at the start of a bend in the road (-)</li> <li>Sufficient parking and child drop-off space must be ensured on the site to allow parents to come off the main road to drop off and pick up children</li> </ul>	<ul style="list-style-type: none"> <li>Enough space to develop an entrance (+)</li> <li>A long boundary alongside the highway (+)</li> <li>A mains water pipe runs near the road on part of the site (-)</li> </ul> <p><b>Architect's Observations</b></p> <ul style="list-style-type: none"> <li>A need to relocate overhead electricity cables</li> <li>A slope between the road and car park on the site</li> </ul>	extra cost to generate a supply
2.	<b>Land to the rear of Muriau (by the railway bridge)</b>	<ul style="list-style-type: none"> <li>11,500m<sup>2</sup></li> <li>Sufficiently large</li> </ul>	<ul style="list-style-type: none"> <li>outside but bordering the development boundary (-)</li> <li>bordering a tree preservation order site (-)</li> <li>bordering the railway line (-)</li> <li>part designated a wildlife site (-)</li> </ul>	<ul style="list-style-type: none"> <li>The site borders Lôn Fêl, a narrow single-track road without footways or parking opportunities nearby (-)</li> <li>There is scope to widen the road on the fringes of the site but this does not surmount the problem of a narrow road over a bridge, and the lack of local footpaths (-)</li> </ul>	<ul style="list-style-type: none"> <li>The land is not as level (-)</li> <li>A short boundary from the road (-)</li> <li>Difficult to create an entrance (-)</li> </ul>	<ul style="list-style-type: none"> <li>Private land - The land will need to be bought for the school site</li> </ul>



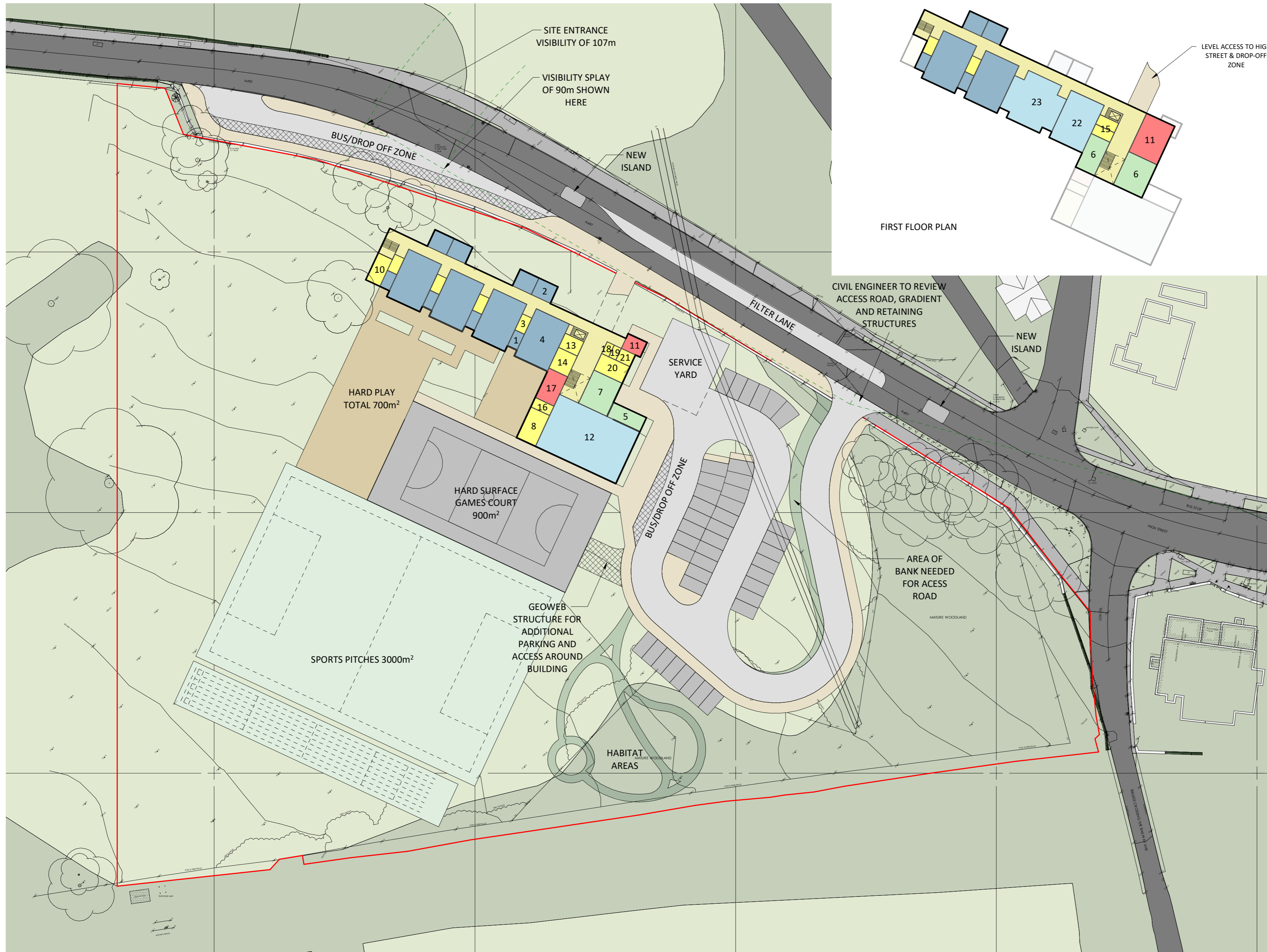
3.	<b>Land adjoining Y Dryll</b>	<ul style="list-style-type: none"> <li>• 24,000m<sup>2</sup></li> <li>• Sufficiently large</li> </ul>	<ul style="list-style-type: none"> <li>• outside but bordering the development boundary (-)</li> <li>• partly within an area designated a scheduled ancient monument buffer zone (-)</li> <li>• bordering a SAC and SSSI conservation areas designation (-)</li> <li>• close to a coastal change management area designation (-)</li> <li>• close to a C2 flood zone (-)</li> </ul>	<ul style="list-style-type: none"> <li>• A lack of footpaths from the direction of Lôn Fêl and West Parade, and a lack of frontage alongside the highway for parking (-)</li> <li>• A risk that parents will choose to park in the nearby car park (-)</li> <li>• The site is far from the town centre (-)</li> </ul>	<ul style="list-style-type: none"> <li>• Level land (+)</li> <li>• Land adjoining a sea cliff (erosion) (-)</li> <li>• A car park already situated by the field (+)</li> </ul>	<ul style="list-style-type: none"> <li>• Private land - The land will need to be bought for the school site</li> </ul>
4.	<b>Land on the other side of Waen Helyg</b>	<ul style="list-style-type: none"> <li>• 15,800m<sup>2</sup></li> <li>• Sufficiently large</li> </ul>	<ul style="list-style-type: none"> <li>• Outside but bordering the development boundary (-)</li> </ul>	<ul style="list-style-type: none"> <li>• The site is far from the town centre (-)</li> <li>• A lack of footpaths immediately in front of the site but possible to provide paths and a crossing to link to the existing network in front of Ty'n Rhos estate</li> </ul>	<ul style="list-style-type: none"> <li>• Level land (+)</li> <li>• A long boundary alongside the highway (+)</li> <li>• Access can easily be created (+)</li> <li>• Gas pipes run through the land (-)</li> </ul>	<ul style="list-style-type: none"> <li>• Private land - The land will need to be bought for the school site</li> </ul>

5.	<b>Cefn-iwrch Site (Cefn-iwrch and Cefn-iwrch Bach)</b>	<ul style="list-style-type: none"> <li>• 20,600m<sup>2</sup> + 11,060m<sup>2</sup></li> <li>• Sufficiently large</li> <li>• Site dependent on Cefn-iwrch and Cefn-iwrch Bach fields to secure planning rights</li> </ul>	<ul style="list-style-type: none"> <li>• Outside but bordering the development boundary (-)</li> <li>• Houses surrounding the site (-)</li> <li>• A comparatively high site therefore possible to see the school from the lower part of Cricieth and beyond (-)</li> <li>• Across the road from land designated specifically as a site for the construction of new houses (+)</li> </ul>	<ul style="list-style-type: none"> <li>• A comparatively central site, with footways on both sides of the road (+)</li> <li>• Traffic calming system already in place on the adjacent road (+)</li> <li>• A narrow frontage alongside the road therefore an adequate parking and turning space would have to be provided on the site to reduce the impact of parking on the adjacent road</li> <li>• Local residents park along part of the frontage therefore consider another provision for them as part of the development</li> <li>• A winding road, an opportunity to reduce speed to 20 mph</li> <li>• A comparatively quiet road compared with the A487</li> </ul>	<ul style="list-style-type: none"> <li>• Sloping land (-)</li> <li>• An electricity sub-station nearby (+)</li> <li>• A need to relocate overhead electricity cables</li> <li>• Small fields and boundaries consisting of mature plants resulting in having to split the plan over different fields</li> <li>• A lack of gaps between plant growth dictates where an access road and links between parking, buildings and resources can be situated</li> <li>• Houses backing onto the site</li> <li>• No connected services</li> <li>• An old (abandoned) gas pipe on the site could lead to problems and delays if rights or easement still exist</li> </ul>	<ul style="list-style-type: none"> <li>• Private land - The land will need to be bought for the school site</li> <li>• 2 pieces of land owned by several owners</li> </ul>
----	---------------------------------------------------------	--------------------------------------------------------------------------------------------------------------------------------------------------------------------------------------------------------------------------	------------------------------------------------------------------------------------------------------------------------------------------------------------------------------------------------------------------------------------------------------------------------------------------------------------------------------------------------------------------------------------------	---------------------------------------------------------------------------------------------------------------------------------------------------------------------------------------------------------------------------------------------------------------------------------------------------------------------------------------------------------------------------------------------------------------------------------------------------------------------------------------------------------------------------------------------------------------------------------------------------------------------------------------------------------------------------	----------------------------------------------------------------------------------------------------------------------------------------------------------------------------------------------------------------------------------------------------------------------------------------------------------------------------------------------------------------------------------------------------------------------------------------------------------------------------------------------------------------------------------------------------------------------------------------------------------------------------------------------------------------	----------------------------------------------------------------------------------------------------------------------------------------------------------------------------

6.	<b>Land to the rear of Regent Garage</b>	<ul style="list-style-type: none"> <li>• 11,300m<sup>2</sup></li> <li>• Sufficiently large for a development of this size</li> </ul>	<ul style="list-style-type: none"> <li>• within the development boundary but designated specifically as a site for the construction of new houses (-)</li> </ul>	A central site, with footways on both sides	<ul style="list-style-type: none"> <li>• Sloping land (-)</li> <li>• A long boundary alongside the highway (+)</li> </ul>	<ul style="list-style-type: none"> <li>• Private land - The land will need to be bought for the school site</li> <li>• Designated specifically as a site for the construction of new houses therefore the cost of purchasing the land likely to be very expensive</li> </ul>
7.	<b>Station Bakery caravan storage area</b>	<ul style="list-style-type: none"> <li>• 4,500m<sup>2</sup></li> <li>• Not big enough</li> </ul>	<ul style="list-style-type: none"> <li>• within the development boundary (+)</li> <li>• partly within a conservation area (-)</li> <li>• within a scheduled ancient monument buffer zone (-)</li> <li>• bordering/adjacent to listed buildings</li> <li>• bordering the railway line (-)</li> <li>• partly within a site that has recently received planning permission for a residential development (--)</li> </ul>	<ul style="list-style-type: none"> <li>• Site contains part of the Council car park and coach park (-)</li> <li>• Difficult access; a need to go through either the rest of the car park or through new access from the main road (-)</li> <li>• A danger that a school here would lead to misuse of the car park as a drop-off/pick-up area.</li> </ul>	<ul style="list-style-type: none"> <li>• Level land (+)</li> <li>• A car park already situated by the site (+)</li> </ul>	<ul style="list-style-type: none"> <li>• Private land - The land will need to be bought for the school site</li> </ul>
8.	<b>Miniature Golf</b>	<ul style="list-style-type: none"> <li>• 11,500<sup>2</sup></li> <li>• Sufficiently large</li> </ul>	<ul style="list-style-type: none"> <li>• within the development boundary (+)</li> <li>• borders a conservation area boundary</li> </ul>	<ul style="list-style-type: none"> <li>• Access is difficult (through a residential estate) (-)</li> <li>• Access for construction work and traffic management very</li> </ul>	<ul style="list-style-type: none"> <li>• Level land (+)</li> <li>• No services on the site (-)</li> </ul>	<ul style="list-style-type: none"> <li>• Land in Council ownership - land covenant (recreational use)</li> </ul>

			<ul style="list-style-type: none"> <li>(-)</li> <li>within a scheduled ancient monument buffer zone (-)</li> <li>bordering the railway line (-)</li> <li>the entire site within an open space designation (-)</li> <li>a protected playing field (land covenant) (--)</li> <li>Very unlikely to get planning permission (--)</li> </ul>	<ul style="list-style-type: none"> <li>difficult during the construction period (-)</li> <li>A potential that more pupils will increase the traffic problem for the school (-)</li> </ul>	<ul style="list-style-type: none"> <li>A public drain runs underground (-)</li> </ul>	<ul style="list-style-type: none"> <li>Costs attached to creating a temporary entrance across the railway for site development work</li> <li>Costs of creating a permanent entrance over/across the railway for pupils/staff</li> </ul>
9.	Land adjoining Dylan's	<ul style="list-style-type: none"> <li>4,000m<sup>2</sup></li> <li>Not big enough</li> </ul>	<ul style="list-style-type: none"> <li>outside the development boundary (--)</li> <li>mostly within an area designated a scheduled ancient monument buffer zone (-)</li> <li>close to a coastal change management area designation (--)</li> <li>close to a flood zone (--)</li> </ul>	<ul style="list-style-type: none"> <li>Far from everywhere (-)</li> <li>Adjacent to the car park and esplanade, which attract visitors (and gypsies at times of the year) (-)</li> <li>A lack of footpaths to link to the rest of the town (-)</li> <li>A one-way system over the railway crossing which means having to return in the direction of the town square (-)</li> </ul>	<ul style="list-style-type: none"> <li>Level land (+)</li> <li>A car park by the site (+)</li> </ul>	Land in Council ownership
10	Current site of Ysgol Treferthyr	<ul style="list-style-type: none"> <li>5,200m<sup>2</sup></li> <li>Not big enough</li> </ul>		<ul style="list-style-type: none"> <li>Access is very difficult (through a residential estate) (-)</li> <li>A potential that more pupils* will increase the traffic problem for the school (-)</li> </ul>	<ul style="list-style-type: none"> <li>Sloping land (-)</li> <li>An operational school already on the site (+)</li> <li>Existing access to the site (+)</li> <li>Services already on the site (+)</li> <li>A lack of space to develop parking in general (-)</li> </ul>	Land in Council ownership

				(*More pupils as a result of new houses and children returning to the catchment area)	<ul style="list-style-type: none"> <li>No space for traffic management, e.g. drop off (-)</li> <li>Access for construction work and traffic management very difficult during the construction period (-)</li> </ul>	
11.	<b>Capel Uchaf Site</b>	<ul style="list-style-type: none"> <li>13,090m<sup>2</sup></li> <li>Sufficiently large</li> </ul>	<ul style="list-style-type: none"> <li>This site lies outside the development boundary, but a strip of land bordering the B4411 appears to be within (it appears that there is easement on this strip)</li> <li>A water course also appears to run through this strip. A possibility that a NRW licence will be required to develop over the water course</li> <li>The possibility of floods needs to be considered</li> <li>There are several trees on the site, although they do not appear to be subject to a preservation order</li> <li>A need to consider any impact on the residential amenities of residents of neighbouring houses</li> </ul>	<ul style="list-style-type: none"> <li>A comparatively central site, with footways on both sides of the road (+)</li> <li>Traffic calming system already in place on the adjacent road (+)</li> <li>A narrow frontage alongside the road therefore an adequate parking and turning space would have to be provided on the site to reduce the impact of parking on the adjacent road</li> <li>Local residents park along part of the frontage therefore consider another provision for them as part of the development</li> <li>A winding road, an opportunity to reduce speed to 20 mph</li> <li>A comparatively quiet road compared with the A487</li> </ul>	???????	<ul style="list-style-type: none"> <li>Private land - The land will need to be bought for the school site</li> <li>A greenfield site without electricity or gas therefore extra cost to generate a supply</li> </ul>



1. Cloakroom
2. Practical Teaching Area
3. Toilets
4. Classroom
5. Bin Store
6. Plant
7. Kitchen/Servery
8. Chair/Table Store
9. Indoor PE Store
10. Outdoor PE Store
11. Offices/Administration
12. Main Hall
13. Therapist Room
14. Teacher And Visitor Toilets
15. Changing Rooms
16. Staging Appliance Store
17. Staff Room
18. Community Store
19. Community Toilets
20. Community Room
21. Community Office
22. Library/Food Science
23. Resources Class/Room

GIA	-1600m <sup>2</sup>
HARD PLAY	-640m <sup>2</sup>
GAMES COURT	-900m <sup>2</sup>
SOFT PLAY	-1300m <sup>2</sup>
SPORTS PITCHES	-3400m <sup>2</sup>
HABITAT AREA	-350m <sup>2</sup>

REV	DESCRIPTION	DATE	BY

THIS DRAWING IS THE COPYRIGHT OF AINSLEY GOMMON ARCHITECTS. CHECK ALL DIMENSIONS ON SITE. DISCREPANCIES TO BE NOTIFIED TO ARCHITECT. ELEMENTS OF STRUCTURE SHOWN ARE INDICATIVE AND FOR GUIDANCE. FINAL DESIGN TO BE AS STRUCTURAL ENGINEERS DETAILS AND SPECIFICATION. DO NOT SCALE FROM THIS DRAWING. WORK TO FIGURED DIMENSIONS ONLY.

PROJECT  
**YSGOL ARDAL CRICIEITH**  
 for CYNGOR GWYNEDD

DRAWING TITLE  
**SKETCH PROPOSAL 3 - SITE 1**

SCALE	DATE	DRAWN	CHECKED
1 : 500 @A2	08/08/19	MR	GJ

DRAWING STATUS  
**PRELIMINARY**

JOB No	DRAWING No	REVISION
C971	SK1-3	



THE OLD POLICE STATION, 15 GLYNNE WAY, HAWARDEN, CH5 3NS  
 Tel: 01244 537 100 | wales@agarchitects.co.uk | www.agarchitects.co.uk  
 Ainsley Gommon Architects Ltd. Registered in England & Wales No.4187948  
 Registered Office: 1 Price Street, Hamilton Square, Birkenhead CH41 6JN

**1 | PROPOSED SITE PLAN SK1-3**  
 SCALE: 1 : 500

1. Cloakroom
2. Practical Teaching Area
3. Toilets
4. Classroom
5. Bin Store
6. Plant
7. Kitchen/Servery
8. Chair/Table Store
9. Indoor PE Store
10. Outdoor PE Store
11. Offices/Administration
12. Main Hall
13. Therapist Room
14. Teacher And Visitor Toilets
15. Changing Rooms
16. Staging Appliance Store
17. Staff Room
18. Community Store
19. Community Toilets
20. Community Room
21. Community Office
22. Library/Food Science
23. Resources Class/Room

GIA -1390m<sup>2</sup>  
 HARD PLAY -720m<sup>2</sup>  
 GAMES COURT -900m<sup>2</sup>  
 SOFT PLAY -1300m<sup>2</sup>  
 SPORTS PITCHES -3400m<sup>2</sup>  
 HABITAT AREA -350m<sup>2</sup>



Ordnance Survey, (c) Crown Copyright 2019. All rights reserved. Licence number 100022432

REV	DESCRIPTION	DATE	BY
A	INCREASE WIDTH OF SITE ENTRANCE	08.08.19	MR

THIS DRAWING IS THE COPYRIGHT OF AINSLEY GOMMON ARCHITECTS. CHECK ALL DIMENSIONS ON SITE. DISCREPANCIES TO BE NOTIFIED TO ARCHITECT. ELEMENTS OF STRUCTURE SHOWN ARE INDICATIVE AND FOR GUIDANCE. FINAL DESIGN TO BE AS STRUCTURAL ENGINEERS DETAILS AND SPECIFICATION. DO NOT SCALE FROM THIS DRAWING. WORK TO FIGURED DIMENSIONS ONLY.

PROJECT  
**YSGOL ARDAL CRIEITH**  
 for CYNGOR GWYNEDD

DRAWING TITLE  
**SKETCH PROPOSAL 3 - SITE 2**

SCALE	DATE	DRAWN	CHECKED
1:500 @A1	12/07/19	MR	GJ
DRAWING STATUS	PRELIMINARY		
JOB No	C971	DRAWING No	SK2-3
REVISION	A		

**AG** | **A** AINSLEY GOMMON ARCHITECTS  
 THE OLD POLICE STATION, 15 GLYNNE WAY, HAWARDEN, CHS 3HS  
 Tel: 01244 537 100 | wales@agarchitects.co.uk | www.agarchitects.co.uk  
 Ainsley Gommon Architects Ltd. Registered in England & Wales No. 4187948  
 Registered Office: 1 Price Street, Hamilton Square, Birmingham B1 6JH

PRINTED: 08/08/2019 15:22:32



1. Cloakroom
2. Practical Teaching Area
3. Toilets
4. Classroom
5. Bin Store
6. Plant
7. Kitchen/Servery
8. Chair/Table Store
9. Indoor PE Store
10. Outdoor PE Store
11. Offices/Administration
12. Main Hall
13. Therapist Room
14. Teacher And Visitor Toilets
15. Changing Rooms
16. Staging Appliance Store
17. Staff Room
18. Community Store
19. Community Toilets
20. Community Room
21. Community Office
22. Library/Food Science
23. Resources Class/Room

GIA	-1600m <sup>2</sup>
HARD PLAY	-640m <sup>2</sup>
GAMES COURT	-900m <sup>2</sup>
SOFT PLAY	-2750m <sup>2</sup>
SPORTS PITCHES	-3400m <sup>2</sup>
HABITAT AREA	-350m <sup>2</sup>

REV	DESCRIPTION	DATE	BY

THIS DRAWING IS THE COPYRIGHT OF AINSLEY GOMMON ARCHITECTS. CHECK ALL DIMENSIONS ON SITE. DISCREPANCIES TO BE NOTIFIED TO ARCHITECT. ELEMENTS OF STRUCTURE SHOWN ARE INDICATIVE AND FOR GUIDANCE. FINAL DESIGN TO BE AS STRUCTURAL ENGINEERS DETAILS AND SPECIFICATION. DO NOT SCALE FROM THIS DRAWING. WORK TO FIGURED DIMENSIONS ONLY.

PROJECT  
**YSGOL ARDAL CRICIEITH**  
 for CYNGOR GWYNEDD

DRAWING TITLE  
**SKETCH PROPOSAL 1 - SITE**  
**8**

SCALE	DATE	DRAWN	CHECKED
1 : 500 @ A1	07/25/19	RO	GJ

DRAWING STATUS  
**PRELIMINARY**

JOB No  
**C971 SK1-8**

**AG** | **A** AINSLEY GOMMON ARCHITECTS

THE OLD POLICE STATION, 15 GLYNNE WAY, HAWARDEN, CH5 3NS  
 Tel: 01244 537 100 | wales@agarchitects.co.uk | www.agarchitects.co.uk  
 Ainsley Gommon Architects Ltd. Registered in England & Wales No. 4187948  
 Registered Office: 1 Price Street, Hamilton Square, Birkenhead CH41 6JN

PRINTED: 26/07/19 09:50:46

Ordnance Survey, (c) Crown Copyright 2019. All rights reserved. Licence number 100022432

**1 | PROPOSED SITE PLAN SK1-8**  
 SCALE: 1 : 500





1. Cloakroom
2. Practical Teaching Area
3. Toilets
4. Classroom
5. Bin Store
6. Plant
7. Kitchen/Servery
8. Chair/Table Store
9. Indoor PE Store
10. Outdoor PE Store
11. Offices/Administration
12. Main Hall
13. Therapist Room
14. Teacher And Visitor Toilets
15. Changing Rooms
16. Staging Appliance Store
17. Staff Room
18. Community Store
19. Community Toilets
20. Community Room
21. Community Office
22. Library/Food Science
23. Resources Class/Room

GIA	-1475m <sup>2</sup>
HARD PLAY	-750m <sup>2</sup>
GAMES COURT	-900m <sup>2</sup>
SOFT PLAY	-1300m <sup>2</sup>
SPORTS PITCHES	-3400m <sup>2</sup>
HABITAT AREA	-350m <sup>2</sup>

REV	DESCRIPTION	DATE	BY

THIS DRAWING IS THE COPYRIGHT OF AINSLEY GOMMON ARCHITECTS.  
 CHECK ALL DIMENSIONS ON SITE. DISCREPANCIES TO BE NOTIFIED TO ARCHITECT.  
 ELEMENTS OF STRUCTURE SHOWN ARE INDICATIVE AND FOR GUIDANCE.  
 FINAL DESIGN TO BE AS STRUCTURAL ENGINEERS DETAILS AND SPECIFICATION.  
 DO NOT SCALE FROM THIS DRAWING. WORK TO FIGURED DIMENSIONS ONLY.

PROJECT  
**YSGOL ARDAL CRICIETH**  
 for CYNGOR GWYNEDD

DRAWING TITLE  
**SKETCH PROPOSAL 1 - SITE 3**

SCALE	DATE	DRAWN	CHECKED
1 : 500 @A2	02/10/19	RW	GJ

DRAWING STATUS  
**PRELIMINARY**

JOB No	DRAWING No	REVISION
C971	SK3-1	



THE OLD POLICE STATION, 15 GLYNNE WAY, HAWARDEN, CH5 3NS  
 Tel: 01244 537 100 | wales@agarchitects.co.uk | www.agarchitects.co.uk  
 Ainsley Gommon Architects Ltd. Registered in England & Wales No.4187948  
 Registered Office: 1 Price Street, Hamilton Square, Birkenhead CH41 6JN

PRINTED: 03/10/2019 09:36:14

# 1 | PROPOSED SITE PLAN SK3-1

SCALE: 1 : 500

<b>Cyfarfod o:</b>	Panel Adolygu Lleol Cricieth (2il gyfarfod)	<b>Dyddiad:</b> 24/10/2019 7:30yh <b>Lleoliad:</b> Ysgol Trefferthyr, Cricieth
--------------------	------------------------------------------------	-----------------------------------------------------------------------------------

<b>Presennol:</b>	<u>Swyddogion:</u> Gwern ap Rhisiart (GapRh); Gareth Jones (GJ); Sioned Hughes (SH); Geraint Owen (GO); Alan Edwards (AE).  <u>Ar ran Llywodraethwyr Ysgol Trefferthyr:</u> Elin Pugh, Karena Owens, Sioned Roberts, Cyng. Eirwyn Williams, Bethan Williams, Angela Mansel.
-------------------	-----------------------------------------------------------------------------------------------------------------------------------------------------------------------------------------------------------------------------------------------------------------------------------------

<b>Ymddiheuriadau:</b>	Dafydd Williams (Llywodraethwr)
------------------------	---------------------------------

Rhif Eitem	Eitem / Pwnc	Gweithrediad
1.	<b>Croeso</b>	<ul style="list-style-type: none"> <li>Croesawyd pawb i'r cyfarfod gan Gwern ap Rhisiart y Swyddog Addysg.</li> <li>Cyflynwyd Geraint Owen ac Alan Edwards o'r Adran Eiddo i'r cyfarfod er mwyn trafod safleoedd posib ar gyfer adeiladu'r ysgol newydd.</li> </ul>
2.	<b>Diweddariad yn dilyn PAL1</b>	<ul style="list-style-type: none"> <li>Cadarnhaodd nad yw Ysgol Llanystumdwy bellach yn rhan o'r Panel yn dilyn trafodaethau ar ôl y cyfarfod PAL cyntaf.</li> <li>Gofynnwyd a oes unrhyw gwestiynau yn deillio o'r cyfarfod cyntaf? Doedd dim.</li> <li>Aethpwyd drwy'r amserlen ar gyfer trafod y safleoedd a symud y gwaith yn ei flaen. Dal yn anelu i agor yr ysgol newydd ym mis Medi 2022.</li> </ul>
3.	<b>Asesiadau rhestr hir safleoedd</b>	<ul style="list-style-type: none"> <li>Nodwyd fod angen cadw'r trafodaethau'n gyfrinachol ac i bobl ddatgan diddordeb os ydynt yn adnabod perchnogion y safleoedd.</li> <li>Eglurwyd pwrpas y matrices a'i ddibenion ar gyfer cynllunio safle ysgol newydd yng Ngwynedd. Eglurwyd fod y matrices yn cynnwys mewnbwn gan mwy o adrannau na'r Adran Eiddo yn unig.</li> <li>Aethpwyd ymlaen i drafod y matrices asesu safleoedd gan egluro pam fod rhai safleoedd yn anaddas. Eglurwyd pam fod mwyafrif yr opsiynau safleoedd ddim yn bosib e.e dim digon mawr, problemau technegol ayyb</li> <li>Nodwyd fod yr Adran Stadau yn y broses o edrych ar gostau tir safleoedd. Eglurwyd y bydd pris y tir yn effeithio ar gyllid adeiladu yr ysgol a'r adnoddau.</li> </ul>
4.	<b>Trafodaeth safleoedd rhestr fer</b>	<p>Aethwyd ymlaen i drafod y 4 safle oedd dal i'w ystyried.</p> <p>Dangoswyd gynlluniau cysyniadol ar gyfer y 4 safle.</p> <p><b>Safle 1 (Safle A497)</b></p> <ul style="list-style-type: none"> <li>Aethpwyd drwy'r nodiadau ar y matrices a dangos cynllun cysyniadol.</li> <li>Eglurwyd y byddai'n debygol o fod yn adeilad deulawr gyda'r cyfnod sylfaen ar y llawr gwaelod a mynediad allan yn syth o'r dosbarth.</li> <li>Eglurwyd fod y dyluniad yn union maint ar gyfer y safle.</li> <li>Eglurwyd fod dosbarth newydd yn 60 medr sgwâr ar gyfer uchafswm o 30 o blant.</li> <li>Gofynnwyd sut byddai'r plant yn cyrraedd yr ysgol o ran llwybr cerdded.</li> </ul>

		<ul style="list-style-type: none"> <li>• Roedd pryder am y ffordd brysur ac eglurwyd y byddai'r ffordd yn newid yn sylweddol pe bai ysgol yn cael ei hadeiladu. Eglurwyd y byddai cyflymder trafnidiaeth yn mynd i lawr i 20mya er mwngan sicrhau diogelu'r plant a'r cyhoedd.</li> </ul> <p><b>Safle 5 (Safle Cefniwrch):</b></p> <ul style="list-style-type: none"> <li>• Aethpwyd drwy'r nodiadau ar y matrices a dangos cynllun cysyniadol.</li> <li>• Amlygwyd y ffaith fod angen dyluniad gwell sy'n dangos yr adeilad ar ffurf 3D mewn mwy o fanylder er mwyn cael gwell syniad o sut y byddai'n edrych ar y 4 safle. Byddai hyn yn hwyluso'r drafodaeth a'r broses penderfynu ar safle addas.</li> <li>• Gwnaed y sylw fod yr ysgol fel pe bai yn cael ei wasgu ar y safle hwn. Nodwyd nad yw maint yr ysgol i weld yn addas. Dyluniad un llawr fuasai'r ysgol ar y safle yma.</li> </ul> <p><b>Safle 10 + 8 (Presennol + Golff Bach):</b></p> <ul style="list-style-type: none"> <li>• Aethpwyd drwy'r nodiadau ar y matrices a dangos cynllun cysyniadol.</li> <li>• Gofynnwyd a yw'r gost yn gymhareb i brynu tir?</li> <li>• Mae mwyafrif y plant yn dod i'r ysgol ar hyd y Ffordd Henbont a nodwyd fod y ffordd yn beryglus i gerddwyr.</li> <li>• Gofynnwyd beth fuasai'n digwydd i'r safle presennol os na fydd ysgol yna.</li> </ul> <p><b>Safle 11 (Capel Uchaf):</b></p> <ul style="list-style-type: none"> <li>• Aethpwyd drwy'r nodiadau ar y matrices a dangos cynllun cysyniadol.</li> <li>• Gofynnwyd a yw'r ardal tu allan yn cynnig digon o le?</li> </ul>
5.	Camau nesaf	<ul style="list-style-type: none"> <li>• Ar ddiwedd y cyfarfod gofynnwyd a oes rhai o'r 4 sydd ddim yn apelio? Gwnaed y sylw nad oedd yr un o'r pedwar safle heb eu problemau ond y bydda'n debygol fod modd goresgyn rheini.</li> <li>• Y cam nesaf yw dychwelyd efo cynlluniau manylach a rhoi mwy o wybodaeth o flaen y Panel. Bydd angen cyflwyno ffeithiau ar ôl cael pris y tiroedd a phwyso a mesur beth sy'n bwysig i'r ysgol.</li> </ul>
6.	CLOI	<ul style="list-style-type: none"> <li>• Diolchwyd i bawb am fynychu'r cyfarfod. Cytunwyd i gynnal y cyfarfod nesaf yn ystod ail wythnos mis Tachwedd 2019.</li> </ul>

<b>Meeting of:</b>	Cricieth Local Review Panel (2nd meeting)	<b>Date:</b> 24/10/2019 7.30 p.m. <b>Venue:</b> Ysgol Trefferthyr, Cricieth
--------------------	----------------------------------------------	--------------------------------------------------------------------------------

<b>Present:</b>	<p><u>Officers:</u> Gwern ap Rhisiart (GapRh); Gareth Jones (GJ); Sioned Hughes (SH); Geraint Owen (GO); Alan Edwards (AE).</p> <p><u>Representing the Governors of Ysgol Trefferthyr:</u> Elin Pugh, Karena Owens, Sioned Roberts, Cllr Eirwyn Williams, Bethan Williams, Angela Mansel.</p>
-----------------	-------------------------------------------------------------------------------------------------------------------------------------------------------------------------------------------------------------------------------------------------------------------------------------------------------

<b>Apologies:</b>	Dafydd Williams (Governor)
-------------------	----------------------------

Item No.	Item/Subject	Action
1.	Welcome	<ul style="list-style-type: none"> <li>Gwern ap Rhisiart, Education Officer, welcomed everyone to the meeting.</li> <li>Geraint Owen and Alan Edwards of the Property Department were introduced to the meeting in order to discuss possible sites to build the new school.</li> </ul>
2.	Update following LRP1	<ul style="list-style-type: none"> <li>He confirmed that Ysgol Llanystumdwy was no longer part of the Panel following discussions after the first LRP meeting.</li> <li>It was asked whether there were any questions arising from the first meeting? There were none.</li> <li>The timetable for discussing the sites and moving the work forward was considered. The objective remains to open the new school in September 2022.</li> </ul>
3.	Sites' longlist assessments	<ul style="list-style-type: none"> <li>It was noted that there was a need to keep the discussions confidential and for anyone to declare an interest if they know the owners of the sites.</li> <li>The purpose of the matrix was explained and its aim in planning for a new school site in Gwynedd. It was explained that the matrix included input from more departments than just the Property Department.</li> <li>The meeting proceeded to discuss the sites' assessment matrix, explaining why some sites were unsuitable. It was explained why the majority of sites options were not possible, i.e. not big enough, technical problems, etc.</li> <li>It was noted that the Estates Department was in the process of considering sites' land costs. It was explained that the price of the land will affect the funding to build the school and the resources.</li> </ul>
4.	Discussion on shortlisted sites	<p>The meeting proceeded to discuss the four sites that remained under consideration. Conceptual plans for the four sites were shown.</p> <p><b>Site 1 (A497 Site)</b></p> <ul style="list-style-type: none"> <li>The notes on the matrix were read and a conceptual plan displayed.</li> <li>It was explained that this was likely to be a two-storey building with the foundation phase on the ground floor and direct exit outdoors from the classroom.</li> <li>It was explained that the design was of exact size for the site.</li> <li>It was explained that a new classroom was 60m<sup>2</sup> for a maximum 30 children.</li> </ul>

		<ul style="list-style-type: none"> <li>• It was asked how the children would reach the school by footpath.</li> <li>• There was concern about the busy road and it was explained that the road would change drastically in the event of a school being built. It was explained that traffic speed would be reduced to 20mph in order to safeguard children and the public.</li> </ul> <p><b>Site 5 (Cefniwrch Site):</b></p> <ul style="list-style-type: none"> <li>• The notes on the matrix were read and a conceptual plan displayed.</li> <li>• The need for an improved design which shows the building in 3D form with greater detail was highlighted, in order to have a better idea of how it would look on the four sites. This would facilitate the discussion and the process of deciding upon a suitable site.</li> <li>• The observation was made that the school seemed to be squeezed in on this site. It was noted that the size of the school did not appear suitable. The school would be a single-storey design on this site.</li> </ul> <p><b>Site 10 + 8 (Current Site + Miniature Golf):</b></p> <ul style="list-style-type: none"> <li>• The notes on the matrix were read and a conceptual plan displayed.</li> <li>• It was asked how the cost compared to purchasing land.</li> <li>• Most children come to school via Henbont Road and it was mentioned that the road was dangerous for pedestrians.</li> <li>• It was asked what would happen to the current site if there is no school there.</li> </ul> <p><b>Site 11 (Capel Uchaf):</b></p> <ul style="list-style-type: none"> <li>• The notes on the matrix were read and a conceptual plan displayed.</li> <li>• It was asked whether the outdoor area offered adequate space.</li> </ul>
5.	<b>Next steps</b>	<ul style="list-style-type: none"> <li>• At the end of the meeting, it was asked if any of the four did not appeal. It was remarked that none of the four were without their problems, but that it was likely that these could be overcome.</li> <li>• The next step is to return with more detailed plans and to provide the Panel with more information. There will be a need to present facts after obtaining the price of land and evaluating what is important to the school.</li> </ul>
6.	<b>TO CONCLUDE</b>	<ul style="list-style-type: none"> <li>• Everyone was thanked for attending the meeting. It was agreed to hold the next meeting during the second week of November 2019.</li> </ul>

---

### Panel Adolygu Lleol 3 Local Review Panel 3

18:00 Dydd Mawrth, 10 Rhagfyr 2019  
18:00 Tuesday, 10 December 2019

Ysgol Trefferthyr, Cricieth

---

- 1. Croeso ac ymddiheuriadau**  
Welcome and apologies
- 2. Cofnodion cyfarfod PAL 2**  
Minutes of LRP 2
- 3. Diweddariad yn dilyn cyfarfod PAL 2**  
Update following LRP 2
- 4. Safleoedd**  
**(Dadansoddiad SWOT a Matrics)**  
Sites  
(SWOT Analysis and Matrix)
- 5. Dyddiad y cyfarfod nesaf**  
Date of next meeting

Asesiad rhestr fer safleoedd Cricieth (10/12/19)

	SAFLE	MAINT	CYNLLUNIO	TRAFFIG	TECHNEGOL	Effaith ar y costau datblygu	Archwiliadau Tir (safleoedd 1 a 5 yn unig)	Hwylus i plant y dalgylch
1.	Safle A497	<ul style="list-style-type: none"> <li>• 16,500m<sup>2</sup></li> <li>• Digon mawr i ddatblygiad o'r maint yma</li> </ul>	<ul style="list-style-type: none"> <li>• tu allan i'r ffin datblygu (--)</li> <li>• gorchymyn gwarchod coed 3/TPO/D2 ar y safle gyfan (-)</li> <li>• rhan o'r safle wedi ei ddynodi fel safle bywyd gwyllt (-)</li> <li>• ymylu gyda llinell rheilffordd (-)</li> </ul>	<ul style="list-style-type: none"> <li>• Safle'n ymylu a'r A497 ar gyrion y pentref a tu hwnt i pellter cerdded resymol i llawer o'r dref (-)</li> <li>• Mae'r safle tu hwnt i'r cyfyngiad 30m.y.a ac mae'r troedffordd yn darfod cyn cyrraedd y safle (-)</li> <li>• Angen creu palmant newydd ar gyfer cyraedd y safle ar droed (-)</li> <li>• Angen darpariaeth parcio digonol o fewn y safle i leihau risg o rieni'n parcio ar yr A497, mewn lleoliad cyflym ac ar</li> </ul>	<ul style="list-style-type: none"> <li>• Cae gweddol wastad (+)</li> <li>• Gwahaniaeth lefel rhwng y ffordd a'r safle (-)</li> <li>• Coed aeddfed (-)</li> <li>• Digon o le i ddatblygu mynedfa (+)</li> <li>• Ffin hir a'r briffordd (+)</li> <li>• Prif bibell dwr yn rhedeg wrth y ffordd ar rhan o'r safle (-)</li> <li>• Angen ail-leoli gwifrau trydan dros ben</li> </ul>	<p><b>TIR PREIFAT</b></p> <ul style="list-style-type: none"> <li>• Mi fydd angen prynu y tir ar gyfer safle'r ysgol</li> <li>• Safle gwyrdd heb trydan na nwy felly cost ychwanegol creu cyflenwad.</li> </ul>	<p><b>Ecolegol</b></p> <ul style="list-style-type: none"> <li>• Planhigion - dim rhywogaethau a warchodir</li> <li>• Moch daear – olion moch daear ond dim golwg o deyerydd</li> <li>• Ystlymod - dim golwg o nythod</li> <li>• Ymlusgiaid – dim effaith</li> <li>• Adar – dim effaith</li> </ul> <p>(Angen gwaith pellach os bydd gwaith safle yn effeithio ar y coed)</p>	<p>13 cartref plant presenol o fewn 500m i'r ysgol</p> <p>Mwyafrif o fewn 1000m i'r ysgol</p>

				ddechrau troad yn y ffordd (-)	<ul style="list-style-type: none"> <li>• Goledd rhwng ffordd a maes parcio ar safle</li> </ul>		<b>Archeolegol</b> <ul style="list-style-type: none"> <li>• Prehistoric remains: medium potential</li> <li>• Roman remains: low potential</li> <li>• Early medieval remains: low potential</li> <li>• Medieval remains: high potential</li> <li>• Post-medieval remains: high potential</li> </ul>	
--	--	--	--	--------------------------------	------------------------------------------------------------------------------------------------	--	----------------------------------------------------------------------------------------------------------------------------------------------------------------------------------------------------------------------------------------------------------------------------------------------------	--



5.	<b>Safle Cefniwrch a Cefniwrch Bach (Cefniwrch a Cefniwrch Bach)</b>	<ul style="list-style-type: none"> <li>• 20,600m<sup>2</sup> + 11,060m<sup>2</sup></li> <li>• Digon mawr i ddatblygiad o'r maint yma</li> </ul>	<ul style="list-style-type: none"> <li>• Tu allan ond ymylu gyda'r ffin datblygu (-)</li> <li>• Tai o amgylch y safle (-)</li> <li>• Safle reit uchel felly posib gweld yr ysgol o waelodion Cricieth a phellach (-)</li> <li>• Dros ffordd i dir wedi ei ddynodi yn benodol fel safle ar gyfer codi tai newydd (+)</li> </ul>	<ul style="list-style-type: none"> <li>• Safle eitha canolog, gyda troedffyrdd nail ochr i'r ffordd (+)</li> <li>• System tawelu traffig ar y ffordd cyfagos yn barod (+)</li> <li>• Frontage cul gyda'r ffordd ac felly bydda angen darparu lle parcio a troi boddhaol o fewn y safle i lleihau'r effaith parcio ar y ffordd cyfagos.</li> <li>• Trigolion lleol yn parcio ar hyd rhan o'r frontage felly ystyried darpariaeth arall iddyn nhw fel rhan o'r datblygiad.</li> <li>• Ffordd troellog, cyfle i ostwng cyflymder i 20 m.y.a</li> <li>• Ffordd gymharol ddistaw i gymharu a'r A487</li> </ul>	<ul style="list-style-type: none"> <li>• Goledd yn y tir (-)</li> <li>• Is-orsaf drydan gerllaw (+)</li> <li>• Angen ail-leoli gwifrau trydan dros ben</li> <li>• Caeau bach a ffiniau caeau planhigion aeddfed yn golygu gorfod rhanu y cynllun dros gwahanol gaeau</li> <li>• Ddim llawer o doriadau rhwng dyfiant yn rheoli ble ellir leoli ffordd mynediad a cysylltiadau rhwng parcio, adeiladau ac adnoddau</li> <li>• Tai yn cefnu ar y safle</li> <li>• Dim cysylltiad gwasanaethau</li> <li>• Hen bibell nwy ar y safle (abandoned) gall greu anhawster ac oedi os mae hawliau neu "easement" yn dal i fodoli</li> </ul>	<b>TIR PREIFAT</b> <ul style="list-style-type: none"> <li>• Mi fydd angen prynu y tir ar gyfer safle'r ysgol</li> <li>• 2 darn tir ym mherchnogaeth nifer o berchnogion.</li> <li>• Er gwaethaf ymdrechion mae cael gafael ar yr holl berchnogion wedi profi yn broblemus a chael ymateb i'r cynnig i drafod y posibilrwydd o drafodaeth prynu tir wedi bod yn amhosib.</li> <li>• Safle gwyrdd heb trydan na nwy felly cost ychwanegol creu cyflenwad</li> </ul>	<b>Ecolegol</b> <ul style="list-style-type: none"> <li>• Planhigion – peth gwerth ecolegol yng ngheaeau Cefnuwrch.</li> <li>• Gwrych diddorol yn Cefnuwrch Bach</li> <li>• Dim rhywogaethau a warchodir</li> </ul> <b>Archeolegol</b> <ul style="list-style-type: none"> <li>• Prehistoric remains: medium / high potential</li> <li>• Roman remains: low potential</li> <li>• Early medieval remains: low potential</li> <li>• Medieval remains: low potential</li> <li>• Post-medieval remains: low / medium potential</li> </ul>	<p>36 cartref plant presenol o fewn 500m i'r ysgol</p> <p>Mwyafrif o fewn 1000m i'r ysgol</p>
----	----------------------------------------------------------------------	-------------------------------------------------------------------------------------------------------------------------------------------------	--------------------------------------------------------------------------------------------------------------------------------------------------------------------------------------------------------------------------------------------------------------------------------------------------------------------------------	-----------------------------------------------------------------------------------------------------------------------------------------------------------------------------------------------------------------------------------------------------------------------------------------------------------------------------------------------------------------------------------------------------------------------------------------------------------------------------------------------------------------------------------------------------------------------------------------------------------	-----------------------------------------------------------------------------------------------------------------------------------------------------------------------------------------------------------------------------------------------------------------------------------------------------------------------------------------------------------------------------------------------------------------------------------------------------------------------------------------------------------------------------------------------------------------------------------------------------------------------------------	-------------------------------------------------------------------------------------------------------------------------------------------------------------------------------------------------------------------------------------------------------------------------------------------------------------------------------------------------------------------------------------------------------------------------------------------------------------------	-------------------------------------------------------------------------------------------------------------------------------------------------------------------------------------------------------------------------------------------------------------------------------------------------------------------------------------------------------------------------------------------------------------------------------------------------------------------------------------------------------------------------------------	-----------------------------------------------------------------------------------------------

11.	<b>Capel Uchaf</b>	<ul style="list-style-type: none"> <li>13,090 m<sup>2</sup> + 4,046 m<sup>2</sup></li> <li>Arwyne bedd digon mawr i ddatblygiad o'r maint</li> </ul>	<ul style="list-style-type: none"> <li>Mae'r safle yma y tu allan i'r ffin datblygu, ond mae sribyn o'r tir sy'n ymylu gyda'r B4411 yn ymddangos oddi mewn (mae'n ymddangos fod hawddfrait (easement) ar y sribyn yma)</li> <li>mae'n ymddangos fod cwrs dŵr hefyd yn rhedeg trwy'r sribyn yma. Posib bydd angen trwydded CNC i ddatblygu dros cwrs dwr.</li> <li>Posiblwydd o llifogydd</li> </ul>	<ul style="list-style-type: none"> <li>Safle'n ganolog rhwng y stadau mawr i'r gogledd ac o fewn pellter resymol i canol y dref.</li> <li>Mae'r troedffyrdd ar y cyfan yn weddol cul fodd bynnag mae hynny'r rwbath eitha nodweddiadol o lwybrau troed Gricieth. Y mantias yw o leiaf mae troedffyrdd yn bresennol yn yr ardal yma.</li> <li>Lleoliad yr adwy yn ok. Mewn lleoliad sy'n anhebyg o amharu ar mynedfeudd eraill neu gwrthdaro ac unrhyw patrymau presenol o parcio ar y ffordd.</li> <li>Parcio o fewn y safle'n cael ei ddangos ar lefel resymol ond fydd angen autotrack i ddangos fod modd cael cerbydau mawr i mewn a rownd y cylch parcio.</li> </ul>	<ul style="list-style-type: none"> <li>Mae'r lefelau ar draws y safle (gorllewin i'r dwyrain) efo gwahaniaeth o tua 6m lle mae'r ysgol, maes parcio ardal chwarae galed a fydd yn gwneud y lefelau yn anodd iawn i weithio ac mae'n siŵr bydd rhaid adeiladu wal i ddal rhan o'r tir yn ôl.</li> <li>Does dim lle i wneud y cynllun yn un llawr.</li> <li>Does dim lle i ehangu'r ysgol yn y dyfodol sna' fod posib prynu fwy o dir (Parciau Hendre)</li> <li>Mae'r maes parcio o flaen yr ysgol yn dun iawn a fydd o'n syniad cael vehicle tracking yw neud arno i weld os oes posib cael bws i mewn ag allan o'r safle (Maes parcio ar Parciau Hendre)</li> </ul>	<b>TIR PREIFAT</b> <ul style="list-style-type: none"> <li>Mi fydd angen prynu y tir ar gyfer safle'r ysgol</li> <li>Safle gwyrdd heb trydan na nwy felly cost ychwanegol creu cyflenwad</li> <li>Costau croesi afon fach i gyrraedd y safle</li> </ul>		<p>36 cartref plant presenol o fewn 500m i'r ysgol</p> <p>Mwyafrif o fewn 1000m i'r ysgol</p>
-----	--------------------	------------------------------------------------------------------------------------------------------------------------------------------------------	-----------------------------------------------------------------------------------------------------------------------------------------------------------------------------------------------------------------------------------------------------------------------------------------------------------------------------------------------------------------------------------------------------	--------------------------------------------------------------------------------------------------------------------------------------------------------------------------------------------------------------------------------------------------------------------------------------------------------------------------------------------------------------------------------------------------------------------------------------------------------------------------------------------------------------------------------------------------------------------------------------------------------------------------------------------------------------------------	---------------------------------------------------------------------------------------------------------------------------------------------------------------------------------------------------------------------------------------------------------------------------------------------------------------------------------------------------------------------------------------------------------------------------------------------------------------------------------------------------------------------------------------------------------------------------------------------------------------------------------------------------------------------	--------------------------------------------------------------------------------------------------------------------------------------------------------------------------------------------------------------------------------------------------------	--	-----------------------------------------------------------------------------------------------

			<p>angen ei ystyried</p> <ul style="list-style-type: none"> <li>• Mae nifer o goed ar y safle, er nid ydynt yn ymddangos o fod yn destun gorchymyn gwarchod</li> <li>• Debyg mai'r prif issue o'r lleoliad yma fydd gwrthwynebia dau gan breswylwyr lleol ar sail mwynderau.</li> <li>• Wrth yml tir sydd wedi ei ddynodi yn benodol fel safle ar gyfer codi tai newydd (+)</li> <li>• Gwarchod golygfeydd allweddol i</li> </ul>					
--	--	--	-----------------------------------------------------------------------------------------------------------------------------------------------------------------------------------------------------------------------------------------------------------------------------------------------------------------------------------------------------------------------------------------------------------------------------------	--	--	--	--	--

			mewn ac allan o safle'r castell ac byddem yn ymgyngori gyda CADW am hyn pe bai cais ffurfiol yn cael ei dderbyn					
--	--	--	--------------------------------------------------------------------------------------------------------------------------------------------	--	--	--	--	--

10 + 8.	<b>Safle presennol Ysgol Trefferth yr + Golff Bach</b>	<ul style="list-style-type: none"> <li>• 5,200 m<sup>2</sup> + 11,500 m<sup>2</sup></li> <li>• Digon mawr gyda tir Golff Bach</li> </ul>	<ul style="list-style-type: none"> <li>• safle gyfan o fewn dynodiad llecyn agored</li> <li>• tu mewn i'r ffin datblygu (+)</li> <li>• ymylu gyda ffin ardal cadwraeth (-)</li> <li>• tu mewn i ardal byffer heneb gofrestredig (-)</li> <li>• yn ymylu gyda llinell rheilffordd (-)</li> <li>• cae chwarae wedi gwarchod (Cyfamod ar y tir) (-)</li> </ul>	<ul style="list-style-type: none"> <li>• Mynediad yn anodd (trwy stad preswyl) (-)</li> <li>• Potensial fydd mwy o ddisgyblion* yn cynyddu y broblem traffig i'r ysgol (-)</li> </ul> <p>(*Mwy o ddisgyblion o ganlyniad i tai newydd a plant yn dychwelyd i'r dalgylch)</p> <ul style="list-style-type: none"> <li>• Mynediad ar gyfer gwaith adeiladu a rheoli traffig yn anodd iawn yn ystod cyfnod adeiladu (-)</li> </ul>	<ul style="list-style-type: none"> <li>• Goledd yn y tir (-)</li> <li>• Ysgol weithredol ar y safle yn barod (+)</li> <li>• Mynediad i'r safle yn barod (ond yn anodd)</li> <li>• Gwasanaethau ar y safle yn barod (+)</li> <li>• Diffyg lle ar gyfer datblygu parcio cyffredinol (-)</li> <li>• Dim lle ar gyfer rheolaeth traffig e.e 'drop off'(-)</li> <li>• Mynediad ar gyfer gwaith adeiladu a rheolaeth traffig yn anodd iawn yn ystod cyfnod adeiladu (-)</li> <li>• Angen defnyddio rhan o'r Golff Bach ar gyfer yr ysgol a parcio</li> <li>• Angen symud y llwybr cyhoeddus</li> <li>• Problemus adeiladu ysgol newydd heb gael gwared o'r ysgol bresenol</li> </ul>	<p><b>PERCHNOGAETH Y CYNGOR</b> Cyfamod ar y tir (defnydd hamdden yn unig)</p>		<p>31 cartref plant presenol o fewn 500m i'r ysgol</p> <p>Mwyafrif o fewn 1000m i'r ysgol</p>
------------	--------------------------------------------------------	------------------------------------------------------------------------------------------------------------------------------------------	-------------------------------------------------------------------------------------------------------------------------------------------------------------------------------------------------------------------------------------------------------------------------------------------------------------------------------------------------------------	--------------------------------------------------------------------------------------------------------------------------------------------------------------------------------------------------------------------------------------------------------------------------------------------------------------------------------------------------------------------------------------------------------------------------------	--------------------------------------------------------------------------------------------------------------------------------------------------------------------------------------------------------------------------------------------------------------------------------------------------------------------------------------------------------------------------------------------------------------------------------------------------------------------------------------------------------------------------------------------------------------------------------------------------------------------------------------------------------------------------------	------------------------------------------------------------------------------------	--	-----------------------------------------------------------------------------------------------

					<ul style="list-style-type: none"><li>• Mynediad i loriau, buses a nifer ceir yn anodd</li><li>• Tir gwastad (+)</li><li>• Dim gwasanaethau ar y safle (-)</li><li>• Draen cyhoeddus yn rhedeg dan y tir (-)</li></ul>			
--	--	--	--	--	------------------------------------------------------------------------------------------------------------------------------------------------------------------------------------------------------------------------	--	--	--

Cricieth sites shortlist assessment (10/12/19)

(10/12/19)

	SITE	SIZE	PLANNING	TRAFFIC	TECHNICAL	Impact on development costs	Land Surveys (sites 1 and 5 only)	Convenience for catchment children
1.	<b>A497 Site</b>	<ul style="list-style-type: none"> <li>• 16,500m<sup>2</sup></li> <li>• Sufficient -ly large for a development of this size</li> </ul>	<ul style="list-style-type: none"> <li>• outside the development boundary (--)</li> <li>• a tree preservation order 3/TPO/D2 on the entire site (-)</li> <li>• part of the site designated a wildlife site (-)</li> <li>• bordering the railway line (-)</li> </ul>	<ul style="list-style-type: none"> <li>• The site borders the A497 on the outskirts of the village and is beyond reasonable walking distance to many parts of the town (-)</li> <li>• The site is beyond the 30 mph restriction and the footway ends before reaching the site (-)</li> <li>• A need to create a new pavement to reach the site on foot (-)</li> <li>• A need for adequate parking provision within the site to reduce the risk of parents parking on the A497, in a high-speed location and at the start of a bend in the road (-)</li> </ul>	<ul style="list-style-type: none"> <li>• A comparatively level field (+)</li> <li>• A difference in level between the road and site (-)</li> <li>• Mature trees (-)</li> <li>• Enough space to develop an entrance (+)</li> <li>• A long boundary alongside the highway (+)</li> <li>• A mains water pipe runs near the road on part of the site (-)</li> <li>• A need to relocate overhead electricity cables</li> </ul>	<p><b>PRIVATE LAND</b></p> <ul style="list-style-type: none"> <li>• The land will need to be bought for the school site</li> <li>• A greenfield site without electricity or gas therefore extra cost to generate a supply</li> </ul>	<p><b>Ecological</b></p> <ul style="list-style-type: none"> <li>• Plants - no protected species</li> <li>• Badgers - traces of badgers but no indication of setts</li> <li>• Bats - no indication of roosts</li> <li>• Reptiles - no impact</li> <li>• Birds - no impact</li> </ul> <p>(A need for further work if site work has an impact on trees)</p>	<p>13 current pupils' homes within 500m of the school</p> <p>Most within 1000m of the school</p>

					<ul style="list-style-type: none"> <li>• A slope between the road and car park on the site</li> </ul>		<b>Archaeological</b> <ul style="list-style-type: none"> <li>• Prehistoric remains: medium potential</li> <li>• Roman remains: low potential</li> <li>• Early medieval remains: low potential</li> <li>• Medieval remains: high potential</li> <li>• Post-medieval remains: high potential</li> </ul>	
--	--	--	--	--	-------------------------------------------------------------------------------------------------------	--	-------------------------------------------------------------------------------------------------------------------------------------------------------------------------------------------------------------------------------------------------------------------------------------------------------	--



5.	<b>Cefniwrch Site (Cefniwrch and Cefniwrch Bach)</b>	<ul style="list-style-type: none"> <li>• 20,600m<sup>2</sup> + 11,060m<sup>2</sup></li> <li>• Sufficient -ly large for a development of this size</li> </ul>	<ul style="list-style-type: none"> <li>• Outside but bordering the development boundary (-)</li> <li>• Houses surrounding the site (-)</li> <li>• A comparatively high site therefore possible to see the school from the lower part of Cricieth and beyond (-)</li> <li>• Across the road from land designated specifically as a site for the construction of new houses (+)</li> </ul>	<ul style="list-style-type: none"> <li>• A comparatively central site, with footways on both sides of the road (+)</li> <li>• Traffic calming system already in place on the adjacent road (+)</li> <li>• A narrow frontage alongside the road therefore an adequate parking and turning space would have to be provided on the site to reduce the impact of parking on the adjacent road</li> <li>• Local residents park along part of the frontage therefore consider another provision for them as part of the development</li> <li>• A winding road, an opportunity to reduce speed to 20 mph</li> <li>• A comparatively quiet road compared with the A487</li> </ul>	<ul style="list-style-type: none"> <li>• Sloping land (-)</li> <li>• An electricity sub-station nearby (+)</li> <li>• A need to relocate overhead electricity cables</li> <li>• Small fields and boundaries consisting of mature plants resulting in having to split the plan over different fields</li> <li>• A lack of gaps between plant growth dictates where an access road and links between parking, buildings and resources can be situated</li> <li>• Houses backing onto the site</li> <li>• No connected services</li> <li>• An old (abandoned) gas pipe on the site could lead to problems and delays if rights or easement still exist</li> </ul>	<b>PRIVATE LAND</b> <ul style="list-style-type: none"> <li>• The land will need to be bought for the school site</li> <li>• 2 pieces of land owned by several owners</li> <li>• Despite efforts, contacting all owners has proved problematic and getting a response to the offer to discuss the possibility of land purchase talks has been impossible</li> <li>• A greenfield site without electricity or gas therefore extra cost to generate a supply</li> </ul>	<b>Ecological</b> <ul style="list-style-type: none"> <li>• Plants - some ecological value in the fields at Cefniwrch.</li> <li>• Interesting hedge at Cefniwrch Bach</li> <li>• No protected species</li> </ul> <b>Archaeological</b> <ul style="list-style-type: none"> <li>• Prehistoric remains: medium / high potential</li> <li>• Roman remains: low potential</li> <li>• Early medieval remains: low potential</li> <li>• Medieval remains: low potential</li> <li>• Post-medieval remains: low / medium potential</li> </ul>	<p>36 current pupils' homes within 500m of the school</p> <p>Most within 1000m of the school</p>
----	------------------------------------------------------	--------------------------------------------------------------------------------------------------------------------------------------------------------------	------------------------------------------------------------------------------------------------------------------------------------------------------------------------------------------------------------------------------------------------------------------------------------------------------------------------------------------------------------------------------------------	---------------------------------------------------------------------------------------------------------------------------------------------------------------------------------------------------------------------------------------------------------------------------------------------------------------------------------------------------------------------------------------------------------------------------------------------------------------------------------------------------------------------------------------------------------------------------------------------------------------------------------------------------------------------------	----------------------------------------------------------------------------------------------------------------------------------------------------------------------------------------------------------------------------------------------------------------------------------------------------------------------------------------------------------------------------------------------------------------------------------------------------------------------------------------------------------------------------------------------------------------------------------------------------------------------------------------------------------------	----------------------------------------------------------------------------------------------------------------------------------------------------------------------------------------------------------------------------------------------------------------------------------------------------------------------------------------------------------------------------------------------------------------------------------------------------------------------	-------------------------------------------------------------------------------------------------------------------------------------------------------------------------------------------------------------------------------------------------------------------------------------------------------------------------------------------------------------------------------------------------------------------------------------------------------------------------------------------------------------------------------------	--------------------------------------------------------------------------------------------------

11.	Capel Uchaf	<ul style="list-style-type: none"> <li>• 13,090 m<sup>2</sup> + 4,046 m<sup>2</sup></li> <li>• A sufficiently large surface area for a development of this size</li> </ul>	<ul style="list-style-type: none"> <li>• This site lies outside the development boundary, but a strip of land bordering the B4411 appears to be within (it appears that there is easement on this strip)</li> <li>• A water course also appears to run through this strip. A possibility that a NRW licence will be required to develop over the water course</li> <li>• The possibility of floods needs to be considered</li> </ul>	<ul style="list-style-type: none"> <li>• The site is centrally located between the large estates to the north and is within reasonable distance of the town centre</li> <li>• Footways are generally quite narrow, however this is a characteristic of Cricieth footpaths. The advantage is that at least there are pathways in this area</li> <li>• The location of the gate is ok. In a location that is unlikely to disrupt other access points or conflict with any current parking patterns on the road</li> <li>• Parking within the site is shown at a reasonable level but an autotrack will be required to show that it is possible to get large vehicles in and around the parking circle</li> </ul>	<ul style="list-style-type: none"> <li>• The levels across the site (west to east) vary by approximately 6m where the school, car park and hard-surface play area are located, making the levels very difficult to work and it is likely that a wall will have to be built to hold back part of the land</li> <li>• There is not enough space to plan on one level</li> <li>• There is not enough space to extend the school in future unless there is a possibility of purchasing more land (Parciau Hendre)</li> <li>• The car park in front of the school is very tight and it might be an idea to conduct vehicle tracking on it to determine whether a bus can get in and out of the site (car park on Parciau Hendre)</li> </ul>	<p><b>PRIVATE LAND</b></p> <ul style="list-style-type: none"> <li>• The land will need to be bought for the school site</li> <li>• A greenfield site without electricity or gas therefore extra cost to generate a supply</li> <li>• The costs of crossing a stream to reach the site</li> </ul>		<p>36 current pupils' homes within 500m of the school</p> <p>Most within 1000m of the school</p>
-----	-------------	----------------------------------------------------------------------------------------------------------------------------------------------------------------------------	--------------------------------------------------------------------------------------------------------------------------------------------------------------------------------------------------------------------------------------------------------------------------------------------------------------------------------------------------------------------------------------------------------------------------------------	----------------------------------------------------------------------------------------------------------------------------------------------------------------------------------------------------------------------------------------------------------------------------------------------------------------------------------------------------------------------------------------------------------------------------------------------------------------------------------------------------------------------------------------------------------------------------------------------------------------------------------------------------------------------------------------------------------------	----------------------------------------------------------------------------------------------------------------------------------------------------------------------------------------------------------------------------------------------------------------------------------------------------------------------------------------------------------------------------------------------------------------------------------------------------------------------------------------------------------------------------------------------------------------------------------------------------------------------------------------------------------------------------------------------------------------------------------------	--------------------------------------------------------------------------------------------------------------------------------------------------------------------------------------------------------------------------------------------------------------------------------------------------	--	--------------------------------------------------------------------------------------------------

			<ul style="list-style-type: none"><li>• There are several trees on the site, although they do not appear to be subject to a preservation order</li><li>• It is likely that the main issue from this location will be objections by local residents based on amenities</li><li>• Close to land designated specifically as a site for the construction of new houses (+)</li><li>• Protecting key views into and out of the castle site and we would</li></ul>					
--	--	--	--------------------------------------------------------------------------------------------------------------------------------------------------------------------------------------------------------------------------------------------------------------------------------------------------------------------------------------------------------------------------------------------------------------------------------------------------------------	--	--	--	--	--

			consult with CADW on this should a formal application be received					
--	--	--	----------------------------------------------------------------------------------	--	--	--	--	--

10 + 8.	<b>Current Site of Ysgol Treferth -yr + Miniature Golf</b>	<ul style="list-style-type: none"> <li>• 5,200 m<sup>2</sup> + 11,500 m<sup>2</sup></li> <li>• Sufficient -ly large with Miniature Golf land</li> </ul>	<ul style="list-style-type: none"> <li>• the entire site within an open space designation</li> <li>• within the development boundary (+)</li> <li>• borders a conservation area boundary (-)</li> <li>• within a scheduled ancient monument buffer zone (-)</li> <li>• bordering the railway line (-)</li> <li>• a protected playing field (land covenant) (-)</li> </ul>	<ul style="list-style-type: none"> <li>• Access is difficult (through a residential estate) (-)</li> <li>• A potential that more pupils* will increase the traffic problem for the school (-)</li> </ul> <p>(*More pupils as a result of new houses and children returning to the catchment area)</p> <ul style="list-style-type: none"> <li>• Access for construction work and traffic management very difficult during the construction period (-)</li> </ul>	<ul style="list-style-type: none"> <li>• Sloping land (-)</li> <li>• An operational school already on the site (+)</li> <li>• Existing access to the site (but difficult)</li> <li>• Services already on the site (+)</li> <li>• A lack of space to develop parking in general (-)</li> <li>• No space for traffic management, e.g. drop off (-)</li> <li>• Access for construction work and traffic management very difficult during the construction period (-)</li> <li>• A need to use part of the Miniature Golf for the school and parking</li> <li>• A need to divert the public footpath</li> <li>• Building a new school without having got rid of the existing school could prove problematic</li> </ul>	<b>COUNCIL OWNERSHIP</b> Land covenant (leisure use only)		31 current pupils' homes within 500m of the school  Most within 1000m of the school
---------	------------------------------------------------------------	---------------------------------------------------------------------------------------------------------------------------------------------------------	---------------------------------------------------------------------------------------------------------------------------------------------------------------------------------------------------------------------------------------------------------------------------------------------------------------------------------------------------------------------------	-----------------------------------------------------------------------------------------------------------------------------------------------------------------------------------------------------------------------------------------------------------------------------------------------------------------------------------------------------------------------------------------------------------------------------------------------------------------	--------------------------------------------------------------------------------------------------------------------------------------------------------------------------------------------------------------------------------------------------------------------------------------------------------------------------------------------------------------------------------------------------------------------------------------------------------------------------------------------------------------------------------------------------------------------------------------------------------------------------------------------------------------------------------------------------------------------	--------------------------------------------------------------	--	-------------------------------------------------------------------------------------------

					<ul style="list-style-type: none"><li>• Access for lorries, buses and a number of cars would be difficult</li><li>• Level land (+)</li><li>• No services on the site (-)</li><li>• A public drain runs underground (-)</li></ul>			
--	--	--	--	--	----------------------------------------------------------------------------------------------------------------------------------------------------------------------------------------------------------------------------------	--	--	--

## ASESIAD SWOT SAFLEOEDD CRICIETH (10/12/19)

### 1. Safle Cefniwrch

CRYFDERAU	CYFLEOEDD
<ul style="list-style-type: none"> <li>• 36 cartref disgyblion o fewn 500m i'r safle</li> <li>• Dros ffordd i dir wedi ei ddynodi ar gyfer codi tai newydd</li> <li>• Palmentydd ar hyd y prif-ffordd yn arwain i'r safle</li> <li>• System tawelu traffig ar y ffordd cyfagos yn barod</li> <li>• Posibilrwydd i nifer o blant Ty'n Rhos a Waen Helyg gael mynediad hawdd ar droed i'r safle</li> <li>• Is-orsaf drydan gerllaw</li> <li>• Disgyblion yn parhau i fynychu ysgol bresennol hyd nes fydd ysgol newydd yn barod</li> </ul>	
GWENDIDAU	BYGYTHIADAU
<ul style="list-style-type: none"> <li>• Angen delio a nifer o dirfeddianwyr</li> <li>• Trafferthion trafod pris</li> <li>• Tu allan ond ymylu gyda'r ffin datblygu</li> <li>• Safle i'w weld o waelod y dref</li> <li>• Nifer o dai o amgylch y safle</li> <li>• 'Frontage' cul gyda'r ffordd</li> <li>• Trigolion lleol yn parcio ar darn o'r 'frontage'</li> <li>• Goledd yn y tir</li> <li>• Dim gwasanaethau ar safle</li> <li>• Angen ail-leoli gwifrau trydan dros ben</li> <li>• Caeau bach â ffiniau planhigion aeddfed yn golygu gorfod rhannu'r cynllun dros nifer o gaeau</li> <li>• Prinder toriadau rhwng tyfiant yn rheoli ble ellir leoli cysylltu ffyrdd, parcio, adeiladau ac adnoddau</li> <li>• Hen bibell nwy ar safle Cefniwrch Bach</li> </ul>	<ul style="list-style-type: none"> <li>• Potensial 'canolog/uchel' o olion cyn-hanes (arolwg archeolegol)</li> <li>• Cost prynu safle yn debygol o fod yn rhy uchel</li> <li>• Peth planhigion 'diddorol' ar y tir (archwiliad ecolegol)</li> </ul>

**ARGYMHELLIAD:** Diystyru oherwydd trafferthion negodi gyda perchnogion tir, tebygolrwydd fydd pris prynu rhy uchel, tirwedd y caeau yn gwneud cynllunio a datblygu ysgol yn anodd.

## 2. Safle presennol + Golff Bach

CRYFDERAU	CYFLEOEDD
<ul style="list-style-type: none"> <li>• Tir ym mherchnogaeth Cyngor Gwynedd</li> <li>• Canolog i'r dref</li> <li>• Gwasanaethau ar y safle yn barod</li> </ul>	<ul style="list-style-type: none"> <li>• Parhau ar y safle presennol</li> </ul>
GWENDIDAU	BYGYTHIADAU
<ul style="list-style-type: none"> <li>• Mynediad i'r safle yn creu anawsterau</li> <li>• Ceir a plant ar droed yn gorfod mynd drwy stad tai i gyrraedd yr ysgol yn creu risg o ddamwain</li> <li>• Mynediad i bysiau mawr yn amhosib</li> <li>• Dim opsiwn mynediad arall hawdd</li> <li>• Gorfod dargyfeirio llwybr cyhoeddus</li> </ul> <p>Tra'n datblygu safle (2 flynedd):</p> <ul style="list-style-type: none"> <li>• Mynediad i loriau yn anodd iawn</li> <li>• Aflonyddwch tymor hir i drigolion Ffordd Henbont (angen iddynt barcio rhywle arall yng nghyfnod adeiladu)</li> <li>• Angen torri coed aeddfed</li> <li>• Gorfod defnyddio llwybrau amgen i gyrraedd yr ysgol</li> <li>• Dim modd i neb gyrraedd yr ysgol mewn cerbydau (blaw rhai adeiladu)</li> <li>• Dim lle parcio staff</li> <li>• Anodd gwneud y gwaith dymchwel a chlirio'r hen adeilad ysgol yn dilyn cwblhau'r adeilad newydd</li> </ul> <p><b>neu</b></p> <ul style="list-style-type: none"> <li>• Gorfod cau ysgol bresennol a darganfod lleoliad dros dro i ddisgyblion tra fod y gwaith adeiladu yn digwydd</li> </ul>	<ul style="list-style-type: none"> <li>• Creu drwgdeimlad gyda preswylwyr Ffordd Henbont os yn cyflwyno cyfyngiadau parcio neu addasiadau eraill i'r stryd</li> <li>• Cymuned yn colli tir gwyrdd</li> <li>• Posibilrwydd derbyn her gan 'Chwaraeon Cymru' o'r herwydd</li> <li>• Dim sicrwydd fydd modd defnyddio tir Golff Bach oherwydd y cyfmod defnydd hamdden ar y tir (parcio ac adeiladu)</li> <li>• Posibilrwydd bydd datrys y cyfmod yn creu oedi yn y broses drwy orfod dilyn proses cyfreithiol</li> <li>• Bydd potensial mwy o ddisgyblion yn creu mwy o draffig drwy Ffordd Henbont</li> <li>• Amharu ar addysg plant drwy orfod parhau i ddysgu yn yr ysgol bresennol tra fod gwaith adeiladu swnllyd yn digwydd o'u cwmpas</li> </ul>

**ARGYMHELLIAD:** Diystyru oherwydd trafferthion mynediad i'r safle yn y cyfnod adeiladu ac yn dilyn agor ysgol newydd, cyfmod Golff Bach, trafferthion cynnal ysgol yn ystod gwaith datblygu safle, effaith newid man gwyrdd a llwybr poblogaidd ar y gymuned.



### 3. Safle Capel Uchaf

CRYFDERAU	CYFLEOEDD
<ul style="list-style-type: none"> <li>• Safle'n ganolog rhwng y stadau tai i gogledd y dref ac o fewn pellter resymol i canol y dref</li> <li>• <b>36</b> cartref disgyblion o fewn 500m i'r safle</li> <li>• Posibilrwydd i nifer o blant Ty'n Rhos a Waen Helyg gael mynediad hawdd ar droed i'r safle</li> <li>• Drws nesa i dir sydd wedi ei ddynodi ar gyfer codi tai newydd</li> <li>• Disgyblion yn parhau i fynychu ysgol bresennol hyd nes fydd ysgol newydd yn barod</li> </ul> <p>Sylwadau Adran Trafnidiaeth:</p> <ul style="list-style-type: none"> <li>• Palmentydd ar hyd y prif-ffordd at ymylon y safle</li> <li>• System tawelu traffig ar y ffordd cyfagos yn barod</li> <li>• Ffordd gymharol dawel</li> <li>• Mewn lleoliad sy'n annhebygol o amharu ar mynedfeydd eraill neu gwrthdaro ac unrhyw patrymau presennol o parcio ar y ffordd</li> </ul>	<ul style="list-style-type: none"> <li>• Cyfle i ddefnyddio yr ysgol fel adnodd cymunedol mewn ardal o'r dref ble nad oes adnodd ar hyn o bryd</li> </ul>
GWENDIDAU	BYGYTHIADAU
<ul style="list-style-type: none"> <li>• Safle i'w weld o waelod y dref</li> <li>• Rhywfaint o dai o amgylch y safle</li> <li>• Safle yn dynn</li> </ul>	<ul style="list-style-type: none"> <li>• Tu allan ond ymylu gyda'r ffin datblygu</li> <li>• Nant yn llifo wrth ochr y safle</li> <li>• Angen ystyried golygfa o'r castell</li> <li>• Goledd yn y tir</li> <li>• Dim gwasanaethau ar safle</li> <li>• Anodd ehangu'r safle</li> </ul>

**ARGYMHELLIAD:** Safle yn addas ond angen gwaith ychwanegol i gadarnhau ei addasrwydd.

#### 4. Safle A497

CRYFDERAU	CYFLEOEDD
<ul style="list-style-type: none"> <li>• Cae gweddol wastad</li> <li>• Dim tai o amgylch y safle</li> <li>• Safle digon mawr i ddatblygu dyluniad hyblyg</li> <li>• Ffin hir o'r briffordd heb unrhyw adeiladau</li> <li>• Digon o le i greu mynedfa ond angen ystyried lefelau gwahanol</li> <li>• Dim i'w weld o'r castell</li> <li>• Disgyblion yn parhau i fynychu ysgol bresennol hyd nes fydd ysgol newydd yn barod</li> </ul>	<ul style="list-style-type: none"> <li>• Cyfle i arafu traffig i fewn i'r dref</li> </ul>
GWENDIDAU	BYGYTHIADAU
<ul style="list-style-type: none"> <li>• Angen ail-leoli gwifrau trydan dros ben</li> <li>• Dim ond <b>13</b> cartref disgyblion o fewn 500m i'r safle</li> <li>• Posib fydd llwybr saff i'r ysgol yn broblemus i rhai o'r plant o ran uchaf y dref a chyfeiriad lan y mor</li> <li>• Lleoliad anghyfleus ar gyfer defnydd cymunedol</li> <li>• Rhan o'r safle wedi ei ddynodi fel safle bywyd gwyllt</li> </ul>	<ul style="list-style-type: none"> <li>• Tu allan i ffin datblygu</li> <li>• Dim gwasanaethau ar safle</li> <li>• Gorchymyn gwarchod coed ar y safle</li> <li>• Potensial 'uchel' o olion ôl-ganoloesol (<i>The potential for preserved remains of the post-medieval period to be encountered during the works is considered to be high</i>)</li> </ul> <p>Sylwadau Adran Trafnidiaeth:</p> <ul style="list-style-type: none"> <li>• Wrth prif-ffordd prysur</li> <li>• Tu hwnt i gyfyngiad 30 mya</li> <li>• Dim palmant ochr safle o'r ffordd</li> <li>• Gwahaniaeth lefel rhwng ffordd a'r cae</li> <li>• Risg fydd nifer o rieni yn cludo eu plant mewn ceir i'r ysgol</li> </ul>

**ARGYMHELLIAD:** Safle yn addas ond angen gwaith ychwanegol i gadarnhau ei addasrwydd.

## CRICIETH SITES SWOT ASSESSMENT (10/12/19)

### 1. Cefniwrch Site

STRENGTHS	OPPORTUNITIES
<ul style="list-style-type: none"> <li>• 36 pupils' homes within 500m of the site</li> <li>• Over the road from land designated for the construction of new houses</li> <li>• Pavements along the highway leading to the site</li> <li>• Traffic calming system already in place on the adjacent road</li> <li>• The possibility of a number of children from Ty'n Rhos and Waen Helyg gaining easy pedestrian access to the site</li> <li>• An electricity sub-station nearby</li> <li>• Pupils continuing to attend their current school until the new school is ready</li> </ul>	
WEAKNESSES	THREATS
<ul style="list-style-type: none"> <li>• A need to deal with several landowners</li> <li>• Problems in discussing a price</li> <li>• Outside but bordering the development boundary</li> <li>• The site visible from the lower part of the town</li> <li>• Several houses surround the site</li> <li>• A narrow frontage alongside the road</li> <li>• Local residents parking along part of the frontage</li> <li>• Sloping land</li> <li>• No services on the site</li> <li>• A need to relocate overhead electricity cables</li> <li>• Small fields and boundaries consisting of mature plants resulting in having to split the plan over several fields</li> <li>• A lack of gaps between plant growth dictates where road links, parking, buildings and resources can be situated</li> <li>• An old gas pipe on the site of Cefniwrch Bach</li> </ul>	<ul style="list-style-type: none"> <li>• A 'moderate/high' potential for prehistoric remains (archaeological survey)</li> <li>• Site purchase cost is likely to be too high</li> <li>• Some 'interesting' plants on the land (archaeological survey)</li> </ul>

**RECOMMENDATION:** Disregard due to problems negotiating with landowners, the likelihood that the purchase cost will be too high, and the landscape of the fields making planning and developing a school difficult.

## 2. Current Site + Miniature Golf

STRENGTHS	OPPORTUNITIES
<ul style="list-style-type: none"> <li>• Land owned by Gwynedd Council</li> <li>• Central to the town</li> <li>• Services already on the site</li> </ul>	<ul style="list-style-type: none"> <li>• Remaining on the current site</li> </ul>
WEAKNESSES	THREATS
<ul style="list-style-type: none"> <li>• Access to the site posing problems</li> <li>• Cars and children on foot having to pass through a housing estate to reach the school creating a risk of an accident</li> <li>• Access for large buses impossible</li> <li>• No other easy access option</li> <li>• Having to divert a public footpath</li> </ul> <p>While developing the site (2 years):</p> <ul style="list-style-type: none"> <li>• Access for lorries very difficult</li> <li>• Long-term disruption for the residents of Henbont Road (they would need to park elsewhere during the construction period)</li> <li>• A need to cut down mature trees</li> <li>• The need to use alternative routes to reach school</li> <li>• Not possible for anyone to reach the school in vehicles (other than construction vehicles)</li> <li>• No staff parking space</li> <li>• Difficult to carry out the demolition work and clear away the old school building after completing the new building</li> </ul> <p style="text-align: center;"><b>or</b></p> <ul style="list-style-type: none"> <li>• Having to close the existing school and find a temporary location for pupils while the construction work takes place</li> </ul>	<ul style="list-style-type: none"> <li>• Creating ill-feeling among the residents of Henbont Road if parking restrictions or other adjustments to the street are introduced</li> <li>• The community loses a greenfield site</li> <li>• The possibility of being challenged by Sports Wales as a result</li> <li>• No certainty that the Miniature Golf grounds could be used due to the leisure-use covenant on the land (parking and building)</li> <li>• The possibility that resolving the covenant would create a delay by having to follow a legal process</li> <li>• The potential for more pupils would generate more traffic through Henbont Road</li> <li>• A disruption to children's education by having to continue learning in the current school while noisy construction work takes place around them</li> </ul>

**RECOMMENDATION:** Disregard due to site access problems during the construction period and after the opening of the new school, the Miniature Golf covenant, the difficulties of running a school during site-development work, the impact of changing the use of a green site and a popular path on the community.

### 3. Capel Uchaf Site

STRENGTHS	OPPORTUNITIES
<ul style="list-style-type: none"> <li>• The site is centrally located between the housing estates to the north of the town and is within reasonable distance of the town centre</li> <li>• 36 pupils' homes within 500m of the site</li> <li>• The possibility of a number of children from Ty'n Rhos and Waen Helyg gaining easy pedestrian access to the site</li> <li>• Immediately adjacent to land designated for the construction of new houses</li> <li>• Pupils continuing to attend their current school until the new school is ready</li> </ul> <p>Transport Department Observations:</p> <ul style="list-style-type: none"> <li>• Pavements along the highway leading to the fringes of the site</li> <li>• Traffic calming system already in place on the adjacent road</li> <li>• A comparatively quiet road</li> <li>• In a location that is unlikely to disrupt other access points or conflict with any current parking patterns on the road</li> </ul>	<ul style="list-style-type: none"> <li>• An opportunity to use the school as a community resource in a part of the town without a resource at present</li> </ul>
WEAKNESSES	THREATS
<ul style="list-style-type: none"> <li>• Site visible from the lower town</li> <li>• Some houses surround the site</li> <li>• The site is tight</li> </ul>	<ul style="list-style-type: none"> <li>• Outside but bordering the development boundary</li> <li>• A stream runs alongside the site</li> <li>• A need to consider the view from the castle</li> <li>• Sloping land</li> <li>• No services on the site</li> <li>• Difficult to expand the site</li> </ul>

**RECOMMENDATION:** The site is suitable but additional work is needed to confirm its suitability.

#### 4. A497 Site

STRENGTHS	OPPORTUNITIES
<ul style="list-style-type: none"> <li>• A comparatively level field</li> <li>• No houses surrounding the site</li> <li>• The site is large enough to develop a flexible design</li> <li>• A long boundary from the highway with no buildings</li> <li>• Enough space to create an entrance but a need to consider different levels</li> <li>• Cannot be seen from the castle</li> <li>• Pupils continuing to attend their current school until the new school is ready</li> </ul>	<ul style="list-style-type: none"> <li>• An opportunity to slow down traffic into the town</li> </ul>
WEAKNESSES	THREATS
<ul style="list-style-type: none"> <li>• A need to relocate overhead electricity cables</li> <li>• Only <b>13</b> pupils' homes within 500m of the site</li> <li>• A possibility that a safe route to school will be problematic to some of the children from the upper part of the town and from the direction of the seaside</li> <li>• An inconvenient location for community use</li> <li>• Part of the site has been designated a wildlife site</li> </ul>	<ul style="list-style-type: none"> <li>• Outside the development boundary</li> <li>• No services on the site</li> <li>• A tree preservation order on the site</li> <li>• A 'high' potential for post-medieval remains (<i>The potential for preserved remains of the post-medieval period to be encountered during the works is considered to be high</i>)</li> </ul> <p>Transport Department Observations:</p> <ul style="list-style-type: none"> <li>• Adjacent to a busy highway</li> <li>• Outside the 30 mph restriction</li> <li>• No pavement on the site side of the road</li> <li>• A difference in level between the road and field</li> <li>• A risk that many parents will convey their children to school by car</li> </ul>

**RECOMMENDATION:** The site is suitable but additional work is needed to confirm its suitability.

# Panel Adolygu Lleol Cricieth 3

Addysg

<b>Cyfarfod o:</b>	Panel Adolygu Lleol (3ydd cyfarfod)	<b>Dyddiad:</b> 10/12/2019 6:00yh <b>Lleoliad:</b> Ysgol Trefferthyr, Cricieth
--------------------	-------------------------------------	-----------------------------------------------------------------------------------

<b>Presennol:</b>	<p><u>Swyddogion:</u> Gwern ap Rhisiart (GapRh); Geraint Owen (GO); Alan Edwards (AE); Gareth Jones (GJ); Sioned Hughes (SH);</p> <p><u>Ar ran Llywodraethwyr Ysgol Trefferthyr:</u> Elin Pugh, Karena Owens, Sioned Roberts, Eirwyn Williams, Bethan Williams, Angela Mansel, Dafydd Williams</p>
-------------------	------------------------------------------------------------------------------------------------------------------------------------------------------------------------------------------------------------------------------------------------------------------------------------------------------------

<b>Ymddiheuriadau:</b>
------------------------

Rhif Eitem	Eitem / Pwnc	Gweithrediad
1.	<b>CROESO</b>	<ul style="list-style-type: none"> <li>• Croesawyd pawb i'r cyfarfod a diolchwyd am y lluniaeth.</li> <li>• Eglurwyd fod gwaith wedi bod yn mynd ymlaen ers y cyfarfod diwethaf. Ni ddiystyrwyd unrhyw safle yn ystod y cyfarfod diwethaf.</li> <li>• Bwriad y noson yw dod i benderfyniad ar safle ffafredig.</li> </ul>
2.	<p><b>Safleoedd ar y rhestr fer:</b></p> <p>a) Cefniwrch b) Safle Presennol c) Capel Uchaf d) Safle A497</p>	<p><b>Cefniwrch:</b> Aethpwyd drwy'r asesiad SWOT</p> <ul style="list-style-type: none"> <li>• Trafodwyd y problemau ar y safle yma o ran prynu y tir.</li> <li>• Eglurwyd byddai elfennau cynnal a chadw safle mor fawr yn heriol. Aethpwyd drwy'r rhesymau pam nad yw'r safle yn addas.</li> <li>• Gofynnwyd pam fod cymaint o sylw yn cael ei roi i'r olygfa o'r ysgol a thuag at yr ysgol. Atebwyd y cwestiwn gan GO. Cafwyd crynodeb o'r ffactorau sy'n diystyru'r safle yma. Ategwyd fod y gost yn ffactor ac eglurwyd po fwyaf y bydd raid gwario ar brynu tir, llai o arian fydd ar gyfer y gwaith adeiladu.</li> </ul> <p><b>Safle Presennol:</b> Aethpwyd drwy'r asesiad SWOT</p> <ul style="list-style-type: none"> <li>• Heriau i'r safle hwn. Mynediad yn broblemus, anhawster adeiladu ysgol newydd ac anhawster hirdymor ar gyfer rhoi estyniad ar gyfer y dyfodol a lleoli gwasanaeth gofal plant yma. Byddai'r safle yn brysur iawn efo nôl a danfon disgyblion i'r dyfodol.</li> <li>• Gofynnwyd a fyddai modd dymchwel tŷ ar y rheilffordd ac addasu'r ffordd yno er mwyn dod i mewn i'r ysgol. Mi fyddai hyn yn ddrud i'w wneud.</li> <li>• Atebwyd gan GapRh ein bod wedi edrych ar bopeth sy'n cwmpasu'r safle presennol.</li> <li>• Eglurwyd fod cyfamod ar y Golff Bach a bod ffactorau sydd yn diystyru'r safle hwn.</li> <li>• Ategwyd gan GO y problemau a fyddai'n codi wrth geisio gweithio efo 'Network Rail' a'r gost fawr o adeiladu pont ar gyfer y daith i'r ysgol.</li> <li>• Nodwyd na fyddai modd cael datrysiad i'r problemau sydd yma ar y safle presennol. Mae diogelwch y plant yn bwysig iawn a byddai risg o gael damwain yn uchel yma.</li> </ul> <p><b>Capel Uchaf:</b></p>

Parch • Gwasanaethu • Positif • Gweithio fel tîm • Gwerth am arian  
Respect • Serving • Positive • Working as a team • Value for money

		<p>Aethpwyd drwy'r asesiad SWOT</p> <ul style="list-style-type: none"> <li>• Dangoswyd y safle ar y map. Eglurwyd nad yw ym mherchnogaeth y Cyngor. Aethpwyd drwy'r cryfderau a'r gwendidau.</li> <li>• Eglurwyd fod yn rhaid dilyn amodau adeiladu BB99 (ar gyfer ysgolion cynradd) er mwyn diwallu'r amod grant. Dangoswyd cynllun o'r ysgol ar y safle hwn. Aethpwyd drwy'r cynllun ar y bwrdd gwyn. Eglurwyd beth yw maint y cae chwarae a maint yr ysgol a fod yr Uned Eiddo yn dilyn canllawiau pendant gan Llywodraeth Cymru.</li> <li>• Gwnaed y sylw fod y safle yma yn dynn o ran maint ond bod yr ysgol newydd yn ffitio yma ond yn ddelfrydol buasai ychydig mwy o dir yn gwneud pethau'n haws ar y safle hwn.</li> <li>• Eglurwyd fod yr arwynebedd glas yn ddigonol ar gyfer 150 o blant a 30 o blant meithrin. Rhaid i ddosbarthiadau ysgolion newydd fod yn 60 medr sgwâr. Amlygwyd fod angen dilyn y canllawiau ar gyfer y gofod sydd ei angen.</li> <li>• Eglurwyd y bu aelod o'r Adran Eiddo yn tynnu lluniau o'r castell er mwyn dangos sut fyddai'r ysgol yn edrych o'r safle hanesyddol. Ni rhagwelir unrhyw broblemau ar gyfer cael caniatâd cynllunio ar gyfer y safle hwn.</li> <li>• Gwnaed y sylw am y nant sydd ger y safle yma ac eglurwyd y byddai angen adeiladu ffensys i atal y plant rhag mynd yno. Ategwyd gan GO nad yw'r afon yn broblem na eillir gael ei oresgyn.</li> </ul> <p><b>Safle A497:</b> Aethpwyd drwy'r asesiad SWOT</p> <ul style="list-style-type: none"> <li>• Dangoswyd cynllun y safle yma. Aethpwyd drwy'r cryfderau a'r gwendidau ar y safle. Nodwyd y byddai'r ffordd yn newid i fod yn ffordd 20mya cyn cyrraedd yr ysgol.</li> <li>• Pryder un aelod na fyddai'r ysgol ar y safle yma yn gweld llawer o haul gan y byddai mewn ychydig o bant.</li> </ul>
3.	Trafodaeth	<ul style="list-style-type: none"> <li>• Eglurwyd pam fod y safle presennol a Cefniwrch wedi eu diystyru.</li> <li>• Amlygwyd y gallai problemau godi ar y ddau safle sydd ar ôl yn sgil gwneud mwy o ymchwilio ar y tir. Eglurwyd fod unrhyw archwiliadau pellach ar y ddau safle sydd o dan ystyriaeth yn costio mwy na beth sydd wedi ei wneud yn barod. Oherwydd hynny.</li> <li>• Gofynnwyd beth oedd pris y safleoedd ond cafwyd eglurhad gan GO nad oes modd datgelu hynny.</li> <li>• Gofynnwyd pa safle sydd agosaf i'r traeth. Gwnaed y sylw pe byddai safle Capel Uchaf gyda mwy o dir a fyddai modd cael gardd wyllt ar dir yr ysgol.</li> <li>• Gofynnwyd beth fyddai maint y cae chwarae ar y cynllun ac eglurwyd ei fod yr un maint a chae pêl droed ar gyfer timau o dan 11 oed.</li> <li>• Gwnaed y sylw fod cartrefi nifer o blant ger safle Capel Uchaf. Byddai'r rhieni o ganlyniad yn hapus gyda'r safle yma.</li> <li>• Mynegodd y panel y byddai'r safle yma yn addas gyda'r opsiwn o brynu mwy o dir yn apelio yn fawr.</li> <li>• Gwnaed y sylw gan y Pennaeth ei bod yn bryderus nad oes digon o le ar gyfer y cyfnod sylfaen.</li> </ul>



		<ul style="list-style-type: none"> <li>• Cynigwyd y buasai'r corff llywodraethol yn cael rhoi mewnbwn i bethau fel y gofod chwarae ac ati yn ystod y broses cynllunio ac yn ystod yr adeiladu.</li> <li>• Nodwyd y byddai'r cylch meithrin yn rhan o'r adeilad ond na fyddai'n dwyn dim gofod gan yr ysgol.</li> </ul>
4.	<b>Camau Nesaf</b>	<ul style="list-style-type: none"> <li>• Nodwyd bydd gwaith ychwanegol yn cael ei wneud ar y 2 safle a dod nol i'r PAL gyda canlyniadau y gwaith.</li> <li>• Nodwyd yn dilyn cytuno safle ffafredig y byddai angen mynd i Gabinet ac yna bydd ymgynghori yn cymryd lle yn lleol yng Nghricieth.</li> <li>• Eglurwyd fod yn rhaid ymgynghori am ein bod yn ehangu'r ysgol yn fwy na 25% o ran capasiti. Bydd cyfle i bobl lleol fynegi barn ar y safle newydd.</li> </ul>
5.	<b>Casgliad</b>	<ul style="list-style-type: none"> <li>• Cytunodd y PAL mai safle Capel Uchaf oedd orau ganddynt. Eglurodd GapRh y bydd gwaith pellach yn cael ei wneud ar y safle ac y bydd yr Adran Stadau yn mynd ati i ymchwilio prynu mwy o dir ar gyfer yr ysgol newydd ar y safle yma.</li> <li>• Eglurwyd y byddai safle A497 yn ail opsiwn pe byddai problemau na eillir eu goresgyn ar safle Capel Uchaf. Roedd y panel yn fodlon gyda hyn.</li> <li>• Trafodwyd yr angen i barhau efo'r elfen gyfrinachol am y safleoedd yn y gymuned gan nad yw'r opsiwn i brynu wedi ei roi mewn lle eto. Diolchwyd i'r panel am barhau i fod yn gyfrinachol am y trafodaethau hyn.</li> <li>• Nodwyd fod hyn wedi creu ychydig o ddrwg deimlad o fewn y corff llywodraethol.</li> <li>• Cynigwyd gan GapRh y byddai'n hapus i gael gair efo'r corff llawn neu'r unigolyn sydd yn anhapus.</li> <li>• Cytuniwyd i lunio llythyr ar gyfer ei rannu efo'r corff llywodraethol llawn er mwyn egluro'r trafodaethau sydd wedi cymryd lle gyda nhw.</li> </ul>
6.	<b>CLOI</b>	<ul style="list-style-type: none"> <li>• Diolchwyd i bawb am fynychu. Diwedd 7:30yh.</li> </ul>

# Cricieth Local Review Panel 3

Addysg

<b>Meeting of:</b>	Local Review Panel (3rd meeting)	<b>Date:</b> 10/12/2019 6 p.m. <b>Venue:</b> Ysgol Trefferthyr, Cricieth
--------------------	----------------------------------	-----------------------------------------------------------------------------

<b>Present:</b>	<p><u>Officers:</u> Gwern ap Rhisiart (GapRh); Geraint Owen (GO); Alan Edwards (AE); Gareth Jones (GJ); Sioned Hughes (SH);</p> <p><u>Representing the Governors of Ysgol Trefferthyr:</u> Elin Pugh, Karena Owens, Sioned Roberts, Eirwyn Williams, Bethan Williams, Angela Mansel, Dafydd Williams</p>
-----------------	------------------------------------------------------------------------------------------------------------------------------------------------------------------------------------------------------------------------------------------------------------------------------------------------------------------

<b>Apologies:</b>	
-------------------	--

Item No.	Item/Subject	Action
1.	<b>WELCOME</b>	<ul style="list-style-type: none"> <li>Everyone was welcomed to the meeting and thanks were expressed for the refreshments.</li> <li>It was explained that work had been going ahead since the previous meeting. No site was disregarded during the previous meeting.</li> <li>The aim of the evening was to decide on a preferred site.</li> </ul>
2.	<p><b>Shortlisted sites:</b></p> <p>a) Cefniwrch b) Current Site c) Capel Uchaf d) A497 Site A497 Site</p>	<p><b>Cefniwrch:</b> The SWOT assessment was considered</p> <ul style="list-style-type: none"> <li>The problems on this site in terms of purchasing the land were discussed.</li> <li>It was explained that maintenance elements on such a big site would be challenging. The reasons why the site was not suitable were contemplated.</li> <li>It was asked why so much attention was being given to the view from the school and towards the school. GO answered the question. A summary of the factors disregarding this site was provided. It was confirmed that cost was a factor and it was explained that the greater the amount that has to be spent on purchasing land, the smaller the funding available for construction work.</li> </ul> <p><b>Current Site:</b> The SWOT assessment was considered</p> <ul style="list-style-type: none"> <li>Challenges with this site. Access is problematic, there is difficulty in building a new school and long-term problems with building an extension for the future and locating the childcare service here. The site would be very busy in future with pupils being dropped off and picked up.</li> <li>It was asked whether it would be possible to demolish the house by the railway and adapt the road at that point in order to enter the school. This would be expensive to carry out.</li> <li>GapRh replied that we have considered everything that encompasses the existing site.</li> <li>It was explained that there was a covenant on the Miniature Golf and that there were factors that led to disregarding this site.</li> <li>GO confirmed the problems that would arise in attempting to work with Network Rail and the huge cost of building a bridge for the journey to school.</li> </ul>

		<ul style="list-style-type: none"> <li>• It was noted that it would not be possible to resolve the problems here on the existing site. The children's safety is paramount and there would be a high risk of an accident here.</li> </ul> <p><b>Capel Uchaf:</b></p> <p>The SWOT assessment was considered</p> <ul style="list-style-type: none"> <li>• The site was shown on the map. It was explained that it is not in Council ownership. The strengths and weaknesses were considered.</li> <li>• It was explained that BB99 building conditions (for primary schools) had to be followed in order to meet the grant requirement. The plan of the school on this site was shown. The plan was examined on the whiteboard. It was explained about the size of the playing field and size of the school and that the Property Section is adhering to specific Welsh Government guidance.</li> <li>• It was observed that this site was tight in terms of size but that the new school did fit here; ideally, however, a little more land would make things easier on this site.</li> <li>• It was explained that the blue area was sufficient for 150 children and 30 nursery children. New school classrooms have to be 60m<sup>2</sup>. The need to follow the guidance for the space required was emphasised.</li> <li>• It was explained that a member of the Property Section had taken photographs from the castle to show how the school would look from the historical site. No problems are anticipated in obtaining planning permission for this site.</li> <li>• An observation was made about the stream near this site and it was explained that it would be necessary to build fences to prevent the children from accessing this area. GO added that the river is not a problem that cannot be overcome.</li> </ul> <p><b>A497 Site:</b></p> <p>The SWOT assessment was considered</p> <ul style="list-style-type: none"> <li>• The plan for this site was shown. The strengths and weaknesses of the site were considered. It was noted that the road would change to become a 20mph road before reaching the school.</li> <li>• One member was concerned that a school on this site would not get much sun as it would be in a slight dip.</li> </ul>
3.	Discussion	<ul style="list-style-type: none"> <li>• It was explained why the existing site and Cefniwrch had been disregarded.</li> <li>• It was made clear that problems could arise on both the remaining sites after conducting more investigations of the land. It was explained that any further investigations on both sites under consideration would therefore cost more than what has been carried out already.</li> <li>• It was asked what the price of the sites was but GO explained that this could not be disclosed.</li> <li>• It was asked which site is nearer the beach. It was mentioned that if the Capel Uchaf site had more land, it might be possible to have a wild garden on school grounds.</li> <li>• A question was asked about the size of the playing field on the plan and it was explained that it was the same size as under-11 teams' football pitch.</li> <li>• It was remarked that the homes of several children were close to the Capel Uchaf site.</li> </ul>

		<p>As a consequence, parents would be happy with this site.</p> <ul style="list-style-type: none"> <li>• The panel stated that this site would be suitable, with the option of purchasing more land appealing greatly.</li> <li>• The Headteacher commented that she was worried about the lack of space for the Foundation Phase.</li> <li>• It was proposed that the governing body could provide input to aspects such as the playing space, etc. during the planning process and during construction.</li> <li>• It was noted that the nursery group would be part of the building but would not be taking any of the school's space.</li> </ul>
4.	<b>Next Steps</b>	<ul style="list-style-type: none"> <li>• It was noted that extra work would be carried out on both sites and that the outcome of the work would be reported to the LRP.</li> <li>• It was noted that after agreeing on a preferred site, there would be a need to go to Cabinet and following this, a local consultation would take place in Cricieth.</li> <li>• It was explained that a consultation had to take place as we were extending the school by more than 25% of its capacity. Local people will have the opportunity to express an opinion on the new site.</li> </ul>
5.	<b>Conclusion</b>	<ul style="list-style-type: none"> <li>• The LRP agreed that it preferred the Capel Uchaf site. GapRh explained that further work will be carried out on the site and that the Estates Department will set about investigating the purchase of more land on this site for the new school.</li> <li>• It was explained that the A497 site would be a second option should insurmountable problems be encountered on the Capel Uchaf site. The panel was satisfied with this.</li> <li>• The need was discussed to maintain confidentiality in the community in relation to the discussions about the sites, as the option to buy has not yet been put in place. The panel was thanked for maintaining the confidentiality of these discussions.</li> <li>• It was noted that this had created a degree of ill-feeling within the governing body.</li> <li>• GapRh said that he was prepared to speak to the governing body in full or to the individual who is unhappy.</li> <li>• It was agreed to draw up a letter to be shared with the governing body as a whole in order to explain the discussions that have taken place.</li> </ul>
6.	<b>TO CONCLUDE</b>	<ul style="list-style-type: none"> <li>• Everyone was thanked for attending. Ended 7.30 p.m.</li> </ul>

---

### Panel Adolygu Lleol 4 Local Review Panel 4

16:00 24 Mehefin 2020

16:00 24 June 2020

Cyfarfod Microsoft Teams Meeting

---

- 1. Croeso ac ymddiheuriadau**  
Welcome and apologies
- 2. Diweddariad yn dilyn cyfarfod PAL 3**  
Update following LRP 3
- 3. Gwaith ychwanegol ar safle Capel Uchaf**  
Additional work on Capel Uchaf site
- 4. Gwaith ychwanegol ar safle A497**  
Additional work on A497 site
- 5. Cytuno ffordd ymlaen a'r amserlen**  
Agree a way forward and timetable

## Materion yn ymwneud a safle Capel Uchaf

	Materion	Gwaith pellach
Gwasanaethau	Trydan, nwy, dwr, carffosiaeth a ffon/rhyngwyd	Angen trefnu cyflenwadau i'r safle
Pibellau nwy	Hen bibell " high pressure" yn croesi'r safle	Angen sefydlu lleoliad y bibell, petai wedi leoli rhy agos neu o dan 'oel troed' yr adeilad buasai rhaid llenwi gyda concriid neu tyllu fynnu.
	Pibell 'byw' yn rhedeg wrth y nant	Tebygol fydd rhaid ail gyfeirio y bibell. Gall hyn fod yn broblemus ble mae'r mynediad newydd yn cael ei leoli a gall fod yn agos i'r adeilad,
Pibellau ddŵr	Pibell ddŵr preifat yn rhedeg ar draws y safle	Angen caniatad preselwyr y tai ar gyfer symud y bibell.
Hawl Tramwyo	Ffordd breifat yn croesi y tir	Angen sefydlu hawl tramwyo newydd a newid llinell y ffordd.
Ecolegol	Archwiliad wedi gwneud . Mae Canclwm Siapaneaidd yn tyfu wrth yr afon.	Mae Canclwm Siapaneaidd yn tyfu wrth yr afon, mae gwaredu y Camclwm yn cymryd hyd at 5 mlynedd ac nid oes posib datblygu'r ardal ble mae'n tyfu yn y cyfnod yma. Mae'n tyfu yn yr ardal ble mae bwriad creu mynedfa ir safle a newid cyfeiriad pibell nwy.
Archeoleg	Archwiliad wedi gwneud. Olion wedi darganfod ar y safle gall fod yn cyn hanesyddo.	Angen gwneud gwaith pellach ond ddim yn bosib oherwydd COVID 19. Os mae gweddillion hanesyddol yn cael ei ddarganfod gall fod yn gostus i'w recordio a gorchuddio.

Cynllunio	Angen caniatâd cynllunio	Trafodaethau cychwynol yn bositif. Y safle i'w weld o'r castell felly mae angen gwaith dylunio a gosod yr adeilad ar y safle i wneud yn siŵr fod yn gweddu, gall hyn fod yn fwy costus i gymharu a projectau arferol.
Traffig	Mynediad i safle a diogelwch	Mewn lleoliad da ar gyfer defnyddwyr. Angen tir ychwanegol oherwydd fod palmant yn gul iawn mewn un man. Uned Traffig yn hapus gyda lleoliad y mynediad, ond petai y cynllun mynedfa yn gorfod symud gall fod yn broblemus.
Ground Investigations	Archwiliad heb gwneud	Aros am ddatrys problemau eraill.
SUDS	Prawf heb ei wneud	Aros am ddatrys problemau eraill.
Maint y safle	Wedi gorfod negodi tir ychwanegol.	Tir yn sylweddol dros gyllideb

**Matters relating to the Capel Uchaf site**

	<b>Matters</b>	<b>Further work</b>
Services	Electricity, gas, water, sewerage and telephone/internet	A need to organise supplies to the site
Gas pipes	An old high-pressure pipe crosses the site	A need to establish the location of the pipe; if located too close to or underneath the building's footprint, it would have to be filled with concrete or dug up
	A live pipe runs by the stream	A likelihood that the pipe will have to be diverted. This may be problematic where the new entrance is located and could be close to the building
Water pipes	A private water pipe runs across the site	Permission needed from the residents of the houses to move the pipe
Right of Way	A private road crosses the land	A need to establish a new right of way and change the line of the road
Ecological	A survey completed. Japanese knotweed grows by the river	Japanese knotweed grows by the river. Eradicating the knotweed takes up to five years and it is not possible to develop the area where it grows during this period. It is growing in the place where it is intended to create an entrance to the site and divert a gas pipe



Archaeology	A survey completed. Remains which may be prehistoric discovered on the site	A need for further work but not possible due to COVID-19. If historical remains are found, it could prove costly to record and cover them
Planning	Planning permission needed	Initial discussions are positive. The site is visible from the castle, therefore work is needed on designing and installing the building on the site to make sure that it fits in. This could prove costlier than usual projects
Traffic	Access to the site and safety	In a good location for users. A need for extra land because the pavement is so narrow in one place. The Traffic Unit is happy with the position of the access, but if the entrance plan had to move it could be problematic
Ground Investigations	Survey not completed	Awaiting the solving of other problems
SUDS	Test not completed	Awaiting the solving of other problems
The size of the site	Extra land had to be negotiated	Land significantly over budget

## Addasrwydd safle A497

	Materion	Gwaith pellach
Gwasanaethau	Trydan, nwy, dwr, carffosiaeth a ffon/rhyngrwyd	Angen trefnu cyflenwadau i'r safle
Hawl tramwyo	Posib fydd Network Rail angen cyraedd Adeilad y Twr / offer rheolaeth signal y trac trenau ar ôl i'r ysgol agor	Angen trafod hawl mynediad gyda Network Rail
Hawl cyraedd draen a dwr	Angen sefydlu draen dwr budr	Angen sefydlu hawl i groesi'r tir os ydi Dwr Cymru yn rhoi caniatâd cysylltu gyda'r pibell wrth y gwaith dwr
Archeolegol	Archwiliad wedi gwneud	Dim problemau mawr, angen "watching brief" pam yn gwneud y Groundworks.
Ecolegol	Archwiliad wedi gwneud	Dim problemau mawr, fydd angen gwarchod y coed a tynnu American Skunk Cabbage o'r cwrs dwr. Safle da gyda ardal ar gyfer gardd natur ayyb
Cynllunio	Angen caniatâd cynllunio	Trafodaethau yn positif hyd yma
Traffig	Mynediad i safle a diogelwch. Angen darparu digon o le parcio o fewn y safle i osgoi'r angen i rieni barcio ar y ffordd fawr. Angen edrych ar wella'r troedffyrdd i'r safle.	Gwneud archwiliad traffig a llwybr saff i'r ysgol
Archwiliadau tir	Archwiliad wedi gwneud	Wedi mynd yn iawn a dim rhwystrau gyda'r tir
SUDS - Gwaredu a dwr glaw or safle	Porosity test wedi ei wneud disgwyl canlyniadau llawn	Bydd angen gwaith ychwanegol i greu swales neu "attenuation tank" ar y safle.
Maint y safle	Digon mawr	Cost o fewn y gyllideb

## A497 Site Suitability

	Matters	Further work
Services	Electricity, gas, water, sewerage and telephone/internet	A need to organise supplies to the site
Right of way	A possibility that Network Rail will need to reach the Tower Building/train track signal control equipment after the school has opened	A need to discuss right of access with Network Rail
Right to access drains and water	A need to establish a dirty water drain	A need to establish the right to cross the land if Welsh Water give consent to connect with the pipe by the waterworks
Archaeological	A survey completed	No significant problems, a need for a watching brief when undertaking groundworks
Ecological	A survey completed	No significant problems, a need to protect the trees and eradicate American skunk cabbage from the water course. A good site, with an area for a nature garden, etc.
Planning	Planning permission needed	Discussions to date are positive
Traffic	Access to the site and safety. A need to provide enough parking space within the site to avoid the need for parents to park on the main road. A need to consider improving the footways onto the site	Undertake a traffic and safe route to school survey
Land surveys	A survey completed	It went well and no hindrances with the land

SUDS - Removing rainwater from the site	Porosity test completed - awaiting full results	Additional work is needed to create swales or an attenuation tank on the site
The size of the site	Sufficiently large	Cost within the budget

**Rhaglen waith Prosiect Cricieth / Work Schedule Cricieth Project.**

<b>Cam Stage</b>	<b>Amserlen Timetable</b>
Penderfyniad safle ffafredig Decision on favoured site	Meh 20 June
Rhannu penderfyniad gyda Corff Llywodraethol Share decision with Governing Body	Gorff 20 July
Rhannu penderfyniad gyda rhieni a staff Share decision with staff and parents	Gorff 20 July
Cynnal arolygon pellach e.e traffig, llwybr saff i'r ysgol Further surveys eg traffic, safe route to school	Meh – Gorff 20 June - July
<b>Trefn Statudol Statutory Procedure</b>	
Cabinet - caniatâd i ymgynghoriad statudol Cabinet – consent to statutory consultation	Medi 20 September
Ymgynghoriad statudol – Statutory Consultation	Hyd – Tach 20 Oct - Nov
Cabinet - adroddiad ymgynghori Cabinet – consultation report	Rhag 20 Dec
Rhybudd Statudol Statutory Notice	Ion - Chwe 21 Jan - Feb
Cabinet - penderfyniad terfynol Cabinet – final decision	9 Maw 21 March 9
<b>Achos fusnes Business Case</b>	
Creu a chytuno achos fusnes BJC Create and agree BJC business case	Gorff - Medi 20 July - Sep
Cymeradwyo achos fusnes (Llywodraeth Cymru) Approve Business Case (Welsh Government)	Tach-Rhag 20 Nov-Dec
<b>Dylunio, cynllunio ac adeiladu Design, Plan and Build</b>	
Gwaith dylunio Design Work	Gorff – Tachwedd 20 July - Nov
Caniatâd cynllunio Planning Permission	Rhag – Chwe 21 Dec-Feb
Dylunio manylach Detailed Design	Rhag – Maw 21 Dec-March
Tendr Tender	Ebr - Mai 21 Apr - May
Adeiladu / Fit out Build	Meh 21 – 2023 June 21 2023
Agor Open	<b>Medi 2023 Sep</b>

# Panel Adolygu Lleol Cricieth 4

Addysg

<b>Cyfarfod o:</b>	Panel Adolygu Lleol (4ydd cyfarfod)	<b>Dyddiad:</b> 24/06/2020 16:00 <b>Lleoliad:</b> Cyfarfod ar ffurf Microsoft Teams
--------------------	-------------------------------------	----------------------------------------------------------------------------------------

<b>Presennol:</b>	<p><u>Swyddogion:</u> Gwern ap Rhisiart (GapRh); Geraint Owen (GO); Alan Edwards (AE); Gareth Jones (GJ); Sioned Hughes (SH);</p> <p><u>Ar ran Llywodraethwyr Ysgol Trefferthyr:</u> Elin Pugh, Karena Owens, Sioned Roberts, Angela Mansel, Dafydd Williams.</p>
-------------------	---------------------------------------------------------------------------------------------------------------------------------------------------------------------------------------------------------------------------------------------------------------------------

<b>Ymddiheuriadau:</b>	Eirwyn Williams, Bethan Williams
------------------------	----------------------------------

Rhif Eitem	Eitem / Pwnc	Gweithrediad
1.	Croeso	<ul style="list-style-type: none"> <li>• Croesawyd pawb i'r cyfarfod.</li> <li>• Trafodwyd y gwaith a fu'n mynd ymlaen ers y cyfarfod diwethaf.</li> <li>• Nodwyd fod y Cyngor wedi ymrwymo mwy o arian ar gyfer prynu mwy o dir ar safle Capel Uchaf pe byddai angen.</li> <li>• Eglurwyd y problemau oedd wedi ymddangos ar safle Capel Uchaf yn sgil gwneud asesiadau manwl ar y safle.</li> </ul>
2.	Capel Uchaf	<ul style="list-style-type: none"> <li>• Eglurwyd gan GO nad yw'r awdurdod wedi prynu'r tir dim ond wedi cael caniatâd gan y Cabinet i gael mwy o arian pe byddai angen. Pwysleiswyd nad yw'r un o'r ddau safle yn ein meddiant eto.</li> <li>• Eglurwyd taw yn dilyn gwneud arolygon manylach ar safle Capel Uchaf y canfuwyd broblemau eithaf sylweddol ar y safle.</li> <li>• Aethpwyd drwy'r daflen 'Materion sy'n codi ar safle Capel Uchaf' gan AE.</li> <li>• Ategwyd gan GO nad oes modd gwneud archwiliad archeolegol ar y safle oherwydd sefyllfa Covid -19.</li> <li>• Nodwyd fod y bibell ddŵr yn croesi'r safle yn broblem a byddai angen i'r asiant drafod datgyfeirio'r beipen efo'r trigolion yn y tai cyfagos gan mae nhw oedd perchnogion y biben.</li> <li>• Cafwyd esboniad gan GO sut y daeth safle Capel Uchaf i'n sylw yn hwyrach na safleoedd eraill a gwnaed yr archwiliad ecolegol ar y cyfle cyntaf sef yn ystod Gwanwyn 2020. Dyma pryd darganfuwyd y Canglwm Siapaneaidd ar y safle. Eglurwyd y buasai trin y Canglwm Siapaneaidd yn cael effaith andwyol ar amserlen y prosiect ac y byddai angen aros 5 mlynedd cyn cael gwneud unrhyw waith cloddio ar ôl difa'r canglwm.</li> <li>• Eglurwyd y byddai risg i gyllid y prosiect be byddai llithriad sylweddol i'r amserlen. Ni fyddai'r prosiect yn cael ei gwblhau o fewn amserlen Llywodraeth Cymru.</li> <li>• Ychwanegwyd gan GapRh fod popeth a drafodwyd yn y cyfarfod blaenorol wedi ei weithredu arno ac fe sicrhawyd arian ychwanegol ar gyfer prynu mwy o dir. Nodwyd fod y bibell ddŵr a'r canglwm yn golygu ansicrwydd ac oherwydd y problemau na ellir eu goresgyn buasai adeiladu ysgol yma yn anodd iawn.</li> </ul>
3.		

4.	A497	<ul style="list-style-type: none"> <li>• Aethpwyd drwy'r ddogfen 'Addasrwydd Safle A497' gan AE.</li> <li>• Atgoffwyd yr aelodau fod y gwaith yma wedi ei roi i un ochr i raddau gan taw safle Capel Uchaf oedd y safle ffafredig. Aethpwyd yn ôl at y safle yma pan amlygwyd y problemau ar safle Capel Uchaf.</li> <li>• Trafodwyd taw yn ddiweddar mae mwy o waith wedi ei wneud yma er mwyn gwirio nad oes problemau sylweddol ar y safle.</li> <li>• Ymddengys pethau'n well ar y safle hwn fel y mae'r ddogfen yn ei ddangos.</li> </ul>
5.	Cwestiynau	<ul style="list-style-type: none"> <li>• Fel y trafodwyd yn flaenorol cyn y Nadolig mae traffic ar y ffordd yma yn peri gofid. Mae'r Lon Fêl i lawr i Gricieth yn beryglus. Bydd pobl yn debygol o fynd ar y ffordd honno i'r ysgol sef y ffordd gyntaf i lawr i'r ysgol.</li> <li>• Ategwyd gan GO fod hyn yn rhywbeth tu allan i reolaeth y prosiect. Mae'r ffordd yn cael ei defnyddio gan drigolion Cricieth ac mae hi'n ffordd amlwg i'w defnyddio i gyrraedd y dref.</li> <li>• Atgoffwyd yr aelodau nad hon oedd y dewis 1af o ran safle ac nid ydyw am dicio pob boc.</li> <li>• Cydnabuwyd y byddai'n rhaid newid y brif ffordd ac eglurwyd sut y byddai hynny'n digwydd.</li> <li>• Ategwyd gan GapRh efallai y bydd modd trafod efo'r rhieni pan fydd hi'n briodol gwneud hynny.</li> <li>• Mae mwy o dir yma. A fyddai'r safle yn adeilad deulawr?</li> <li>• Eglurwyd gan AE mae'n debygol taw safle deulawr fyddai'r ysgol (split level) ond o'r ffordd A497 byddai'n edrych fel adeilad un llawr ac yna byddai cefn yr ysgol yn ddau lawr. Awgrymwyd y byddai mynd i weld Ysgol Glancegin, Maesgeirchen yn rhoi syniad gwell i'r aelodau o ysgol sydd wedi ei dylunio fel hyn.</li> <li>• Oherwydd sefyllfa Covid-19 mae'n bwysig cael mynediad i bob ystafell o ddrws unigol. A fydd y 'normal newydd' yn cael unrhyw effaith ar sut ysgol fydd hi?</li> <li>• Atebwyd gan GapRh ei fod wedi gwirio gyda LIC a oes angen dylunio ysgolion yn wahanol oherwydd Covid-19 ond nid oedd unrhyw beth wedi ei ddatgan eto.</li> <li>• Nodwyd gan GO fod gan Ysgolion Glancegin a Bro Lliffon ddrysau yn mynd allan o bob ystafell ddosbarth. Ychwanegwyd fod cyfle i gael dyluniad mwy cyffrous ar safle A497 oherwydd fod mwy o le yma.</li> <li>• Gwnaed y sylw gan Elin Pugh ei bod wedi cerdded heibio yn ddiweddar ac yn meddwl fod y safle yn leoliad braf.</li> <li>• Ategwyd hynny gan GapRh ac eglurodd taw hwylustod i rieni oedd y nôd ond nid felly y mae. Yn anochel, bydd perygl i rhieni yrru eu plant yn eu ceir i'r ysgol ac nid yw hynny'n ddelfryl ond nodwyd taw hwn yw'r unig safle sy'n cynnig ei hun yn addas ar gyfer lleoliad yr ysgol newydd.</li> <li>• Gwnaed y sylw gan Dafydd Williams efallai fod safle A497 yn well opsiwn erbyn rŵan. Ategwyd gan GapRh fod problemau Capel Uchaf yn anodd iawn i'w goresgyn gan fod amserlen y prosiect yn gofyn i'r arian gael ei wario o fewn 5 mlynedd.</li> </ul>
6.	Amserlen	<ul style="list-style-type: none"> <li>• Aethpwyd drwy'r amserlen gan nodi y byddwn nawr yn anelu i agor yn Medi 2023.</li> <li>• Eglurwyd gan GapRh fod y llithriad yn anochel oherwydd oblygiadau cynnwys Ysgol Llanystumdwy yn y trafodaethau cychwynnol, archwiliadau safle Capel Uchaf ac ymdrechion i ymateb iddynt a sefyllfa bresennol Covid-19.</li> <li>• Nodwyd gan Elin Pugh fod pwysau cynyddol wedi dod gan aelodau o'r Corff</li> </ul>

		<p>Llywodraethol i gael gwybod mwy am safle'r ysgol newydd.</p> <ul style="list-style-type: none"> <li>• Nodwyd gan GapRh yr angen y gynnal y gyfrinachedd cyn i ni gyrraedd y cyfarfod efo'r Corff Llywodraethol llawn fydd yn digwydd ymhen 2-3 wythnos. Eglurwyd pe tai'r safle yn cael ei ddatgleu rŵan byddai risg i bris y tir hwn gynyddu yn sylweddol.</li> <li>• Ategwyd gan GapRh y byddai'n egluro wrth y Corff Llywodraethol llawn pam ein bod wedi gofyn wrth aelodau'r PAL gadw'r gyfrinachedd. Nodwyd y byddai'n fodlon ateb y cwestiwn pam y bu'r gyfrinachedd cyhyd cyn rhannu'r wybodaeth gyda nhw.</li> <li>• Ychwanegwyd wrth ddirwyn y cyfarfod i ben gan GapRh y dylid meddwl yn bositif am y safle ac fod cyfle yma i adeiladu ysgol wych.</li> </ul>
<b>7.</b>	<b>Cloi</b>	17:00



# Cricieth Local Review Panel 4

Addysg

<b>Meeting of:</b>	Local Review Panel (4th meeting)	<b>Date:</b> 24/06/2020 16:00
		<b>Venue:</b> Microsoft Teams Meeting

<b>Present:</b>	<p><u>Officers:</u> Gwern ap Rhisiart (GapRh); Geraint Owen (GO); Alan Edwards (AE); Gareth Jones (GJ); Sioned Hughes (SH);</p> <p><u>Representing the Governors of Ysgol Trefferthyr:</u> Elin Pugh, Karena Owens, Sioned Roberts, Angela Mansel, Dafydd Williams.</p>
-----------------	---------------------------------------------------------------------------------------------------------------------------------------------------------------------------------------------------------------------------------------------------------------------------------

<b>Apologies:</b>	Eirwyn Williams, Bethan Williams
-------------------	----------------------------------

Item No.	Item/Subject	Action
1.	Welcome	<ul style="list-style-type: none"> <li>Everyone was welcomed to the meeting.</li> <li>The work that had proceeded since the previous meeting was discussed.</li> <li>It was noted that the Council had committed more funding to purchase more land on the Capel Uchaf site should this be necessary.</li> <li>The problems that had become evident on the Capel Uchaf site following detailed assessments of the site were explained.</li> </ul>
2.	Capel Uchaf	<ul style="list-style-type: none"> <li>GO explained that the Authority had not purchased the land but that it had received the Cabinet's permission to get more money should the need arise. It was emphasised that neither of the two sites were currently in our ownership yet.</li> <li>It was explained that quite significant problems had been discovered on the Capel Uchaf site after more detailed surveys had been conducted on the site.</li> <li>AE went through the 'Matters Arising on the Capel Uchaf site' handout.</li> <li>GO confirmed that it was not possible to conduct an archaeological survey of the site because of the COVID-19 situation.</li> <li>It was noted that the water pipe crossing the site was a problem and that the agent would need to discuss diverting the pipe with residents of nearby houses as they were the owners of the pipe.</li> </ul>
3.		<ul style="list-style-type: none"> <li>GO explained how the Capel Uchaf site had come to our attention later than the other sites and that the ecological survey had been conducted at the earliest opportunity, i.e. during spring 2020. This was when Japanese knotweed had been found on the site. It was explained that treating the Japanese knotweed would have a detrimental effect on the project timetable and that any excavation work would have to be delayed for five years after eradicating the knotweed.</li> <li>It was explained that there was a risk to project funding if the timetable fell behind significantly. The project would not be completed within the Welsh Government's timetable.</li> <li>GapRh added that action had been taken on everything discussed at the previous meeting and that additional funding had been secured to purchase more land. It was reported that the water pipe and knotweed resulted in uncertainty and that due to insurmountable problems, building a school here would prove very difficult.</li> </ul>

4.	<b>A497</b>	<ul style="list-style-type: none"> <li>• AE went through the 'A497 Site Suitability' document.</li> <li>• Members were reminded that this work had been put to one side to some extent because the Capel Uchaf site had been the preferred site. There was a return to this site when problems were highlighted on the Capel Uchaf site.</li> <li>• It was discussed that more work had been undertaken on this site recently in order to check that there were no significant problems on the site.</li> <li>• It appeared that things were better on this site as the document indicated.</li> </ul>
5.	<b>Questions</b>	<ul style="list-style-type: none"> <li>• As had been previously discussed before Christmas, the traffic on this road caused concern. Lon Fêl down to Cricieth was dangerous. People were likely to use this road to the school as it was the quickest route to the school.</li> <li>• GO added that this was outside the project's control. The road was used by Cricieth residents and was an obvious route to use to reach the town.</li> <li>• Members were reminded that this was not the first choice of site and that it would not tick every box.</li> <li>• It was acknowledged that the highway would have to be modified and it was explained how this would happen.</li> <li>• GapRh added that it might be possible to hold a discussion with parents when appropriate.</li> <li>• There was more land here. Would there be a two-storey building on the site?</li> <li>• AE explained that the school was likely to be a two-storey building (split level) but that from the A497 it would look like a single-storey building and the back of the school would be two storeys. It was suggested that viewing Ysgol Glancegin, Maesgeirchen would provide the members with a better idea of a school designed in this way.</li> <li>• Because of the COVID-19 situation, it was important to have access to each room from a single door. Would the 'new normal' have any impact on what type of school it would be?</li> <li>• GapRh replied that he had checked with WG whether school designs need to be adapted because of COVID-19 but had received no announcement as yet.</li> <li>• GO noted that Ysgol Glancegin and Ysgol Bro Llifon had doors to the outside from each classroom. It was added that there was scope to have a more exciting design on the A497 site because there was more room here.</li> <li>• Elin Pugh commented that she had walked by recently and had thought that the site was in a pleasant location.</li> <li>• This was reiterated by GapRh, and he explained that convenience for parents was the aim but that this wasn't the case. Inevitably, there was a risk that parents would drive their children to school by car and this was not ideal, but it was noted that this was the only site that offered itself as being suitable as a location for a new school.</li> <li>• Dafydd Williams commented that the A497 site might now be a better option. GapRh confirmed that the problems with Capel Uchaf were very difficult to overcome as the project timetable required funding to be spent within five years.</li> </ul>
6.	<b>Timetable</b>	<ul style="list-style-type: none"> <li>• The timetable was considered, noting that we would now aim to open in September 2023.</li> </ul>

		<ul style="list-style-type: none"> <li>• GapRh explained that the slippage was inevitable due to the implications of including Ysgol Llanystumdwy in the initial discussions, investigations on the Capel Uchaf site and efforts to respond to these, and the current COVID-19 situation.</li> <li>• Elin Pugh noted that increasing pressure came from members of the Governing Body to know more about the new school site.</li> <li>• GapRh noted the need to maintain confidentiality prior to the meeting with the full Governing Body that would take place in two to three weeks. It was explained that if the site was disclosed now, there was a risk that the price of this land would increase significantly.</li> <li>• GapRh added that he would explain to the full Governing Body why we had asked LRP members to maintain confidentiality. It was noted that he would be prepared to answer the question of why confidentiality had been maintained for so long before the information was shared with them.</li> <li>• In drawing the meeting to a close, GapRh added that the site should be regarded positively and that there was an opportunity here to build an excellent school.</li> </ul>
<b>7.</b>	<b>Conclusion</b>	17:00